

For Research Use Only

# CoraLite® Plus 488-conjugated VPS28 Recombinant monoclonal antibody

Catalog Number: **CL488-84472-4**



## Basic Information

<b>Catalog Number:</b> CL488-84472-4	<b>GenBank Accession Number:</b> BC006485	<b>Purification Method:</b> Protein A purification
<b>Size:</b> 100ul , Concentration: 1000 ug/ml by Nanodrop;	<b>GeneID (NCBI):</b> 51160	<b>CloneNo.:</b> 241886D3
<b>Source:</b> Rabbit	<b>UNIPROT ID:</b> Q9UK41	<b>Recommended Dilutions:</b> IF/ICC: 1:50-1:500
<b>Isotype:</b> IgG	<b>Full Name:</b> vacuolar protein sorting 28 homolog (S. cerevisiae)	<b>Excitation/Emission maxima wavelengths:</b> 493 nm / 522 nm
<b>Immunogen Catalog Number:</b> AG7784	<b>Calculated MW:</b> 25 kDa	
	<b>Observed MW:</b> 28 kDa	

## Applications

<b>Tested Applications:</b> IF/ICC	<b>Positive Controls:</b> IF/ICC : A549 cells,
<b>Species Specificity:</b> human	

## Background Information

VPS28 is a subunit of the ESCRT-I complex (endosomal sorting complex I required for transport), which functions in the transport and sorting of proteins into subcellular vesicles. The ESCRT-I complex is composed of VPS23 (also known as TSG101), VPS28, VPS37, and MVB12A or MVB12B. VPS28 interacts with VPS23. Two alternative transcripts encoding different VPS28 isoforms have been described.

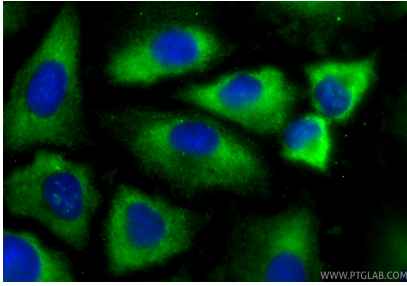
## Storage

**Storage:**  
Store at -20°C. Avoid exposure to light. Stable for one year after shipment.  
**Storage Buffer:**  
PBS with 50% glycerol, 0.05% Proclin300, 0.5% BSA, pH7.3  
Aliquoting is unnecessary for -20°C storage

For technical support and original validation data for this product please contact:  
T: 1 (888) 4PTGLAB (1-888-478-4522) (toll free in USA), or 1(312) 455-8498 (outside USA)  
E: [proteintech@ptglab.com](mailto:proteintech@ptglab.com)  
W: [ptglab.com](http://ptglab.com)

This product is exclusively available under Proteintech Group brand and is not available to purchase from any other manufacturer.

## Selected Validation Data



Immunofluorescent analysis of (-20°C Methanol) fixed A549 cells using Coralite® Plus 488 VPS28 antibody (CL488-84472-4, Clone: 241886D3 ) at dilution of 1:200.