

For Research Use Only



CoraLite® Plus 488-conjugated CD107b / LAMP2 Recombinant monoclonal antibody

Catalog Number: CL488-84474-3

Basic Information

Catalog Number: CL488-84474-3	GenBank Accession Number: NM_001017959.2	Purification Method: Protein A purification
Size: 100ul , Concentration: 1000 ug/ml by Nanodrop;	GeneID (NCBI): 16784	CloneNo.: 241893G7
Source: Rabbit	UNIPROT ID: P17047-1	Recommended Dilutions: IF/ICC: 1:50-1:500
Isotype: IgG	Full Name: lysosomal-associated membrane protein 2	Excitation/Emission maxima wavelengths: 493 nm / 522 nm
Immunogen Catalog Number: EG2029	Calculated MW: 46 kDa	
	Observed MW: 90 kDa	

Applications

Tested Applications: IF/ICC	Positive Controls: IF/ICC : NIH/3T3 cells,
Species Specificity: mouse	

Background Information

Lysosomal-associated membrane protein 2 (LAMP2, synonyms: LAMPB, CD107b) is a member of a family of membrane glycoproteins. This glycoprotein provides selectins with carbohydrate ligands. LAMP2 may play a role in tumor cell metastasis. It may also function in the protection, maintenance, and adhesion of the lysosome. Prior to posttranslational modification, LAMP2 is a ~45 kDa polypeptide. Mature, functional LAMP2 is extensively glycosylated with a variety of different N-linked and O-linked oligosaccharides.

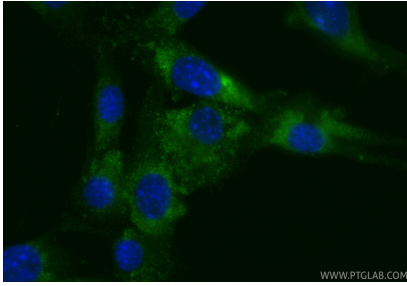
Storage

Storage:
Store at -20°C. Avoid exposure to light. Stable for one year after shipment.
Storage Buffer:
PBS with 50% glycerol, 0.05% Proclin300, 0.5% BSA, pH7.3
Aliquoting is unnecessary for -20°C storage

For technical support and original validation data for this product please contact:
T: 1 (888) 4PTGLAB (1-888-478-4522) (toll free in USA), or 1(312) 455-8498 (outside USA)
E: proteintech@ptglab.com
W: ptglab.com

This product is exclusively available under Proteintech Group brand and is not available to purchase from any other manufacturer.

Selected Validation Data



Immunofluorescent analysis of (4% PFA) fixed NIH/3T3 cells using CoraLite® Plus 488 CD107b / LAMP2 antibody (CL488-84474-3, Clone: 241893G7) at dilution of 1:200.