

For Research Use Only

CoraLite® Plus 488-conjugated CD107b / LAMP2 Recombinant antibody

Catalog Number: **CL488-84474-5**



Basic Information

Catalog Number: CL488-84474-5	GenBank Accession Number: NM_001017959.2	Purification Method: Protein A purification
Size: 100ul , Concentration: 1000 ug/ml by Nanodrop;	GeneID (NCBI): 16784	CloneNo.: 241893A7
Source: Rabbit	UNIPROT ID: P17047-1	Recommended Dilutions: IF/ICC 1:50-1:500
Isotype: IgG	Full Name: lysosomal-associated membrane protein 2	Excitation/Emission maxima wavelengths: 493 nm / 522 nm
Immunogen Catalog Number: EG2029	Calculated MW: 46 kDa	
	Observed MW: 90-110 kDa	

Applications

Tested Applications: IF/ICC	Positive Controls: IF/ICC : NIH/3T3 cells,
Species Specificity: mouse	

Background Information

LAMP2 (CD107b) is a Lysosomal membrane glycoprotein. LAMP2 is extensively glycosylated with asparagine-linked oligosaccharides which protect it from intracellular proteolysis (PMID: 10521503). Although LAMP-2 is localized primarily in the endosome-lysosomal membrane of cells, it is also found on the plasma membrane under certain circumstances, e.g., after platelet activation, during granulocytic differentiation and activation, and in some tumor cells (PMID: 12221139). LAMP is involved in lysosomal stability and autophagy (PMID: 12221139). This glycoprotein provides selectins with carbohydrate ligands. LAMP2 may plays a role in tumor cell metastasis (PMID 9426697).

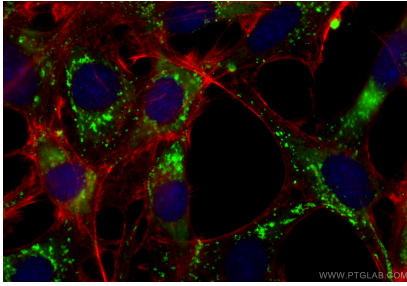
Storage

Storage:
Store at -20°C. Avoid exposure to light. Stable for one year after shipment.
Storage Buffer:
PBS with 50% glycerol, 0.05% Proclin300, 0.5% BSA, pH7.3
Aliquoting is unnecessary for -20°C storage

For technical support and original validation data for this product please contact:
T: 1 (888) 4PTGLAB (1-888-478-4522) (toll free in USA), or 1(312) 455-8498 (outside USA)
E: proteintech@ptglab.com
W: ptglab.com

This product is exclusively available under Proteintech Group brand and is not available to purchase from any other manufacturer.

Selected Validation Data



Immunofluorescent analysis of (-20°C Ethanol) fixed NIH/3T3 cells using CoraLite® Plus 488 CD107b / LAMP2 antibody (CL488-84474-5, Clone: 241893A7) at dilution of 1:200, CL594-Phalloidin (red).