

For Research Use Only

CoraLite® Plus 488-conjugated CKAP4 Recombinant antibody

Catalog Number: CL488-84485-4



Basic Information

Catalog Number: CL488-84485-4	GenBank Accession Number: BC082972	Purification Method: Protein A purification
Size: 100ul , Concentration: 1000 ug/ml by Nanodrop;	GeneID (NCBI): 10970	CloneNo.: 241871B6
Source: Rabbit	UNIPROT ID: Q07065	Recommended Dilutions: IF/ICC: 1:50-1:500
Isotype: IgG	Full Name: cytoskeleton-associated protein 4	Excitation/Emission maxima wavelengths: 493 nm / 522 nm
Immunogen Catalog Number: AG10022	Calculated MW: 602 aa, 66 kDa	
	Observed MW: 63 kDa	

Applications

Tested Applications: IF/ICC	Positive Controls: IF/ICC : A431 cells,
Species Specificity: human	

Background Information

CKAP4 (Cytoskeleton-associated protein 4), also known as CLIMP-63 (cytoskeleton-linking membrane protein 63), is a 63 kDa cytoskeleton-linking membrane protein. CKAP4 is a novel DKK1-binding protein on the cell surface membrane of Madin-Darby canine kidney (MDCK) epithelial cells, and evaluated CKAP4-mediated DKK1 signaling in cancer cell proliferation (PMID: 27322059). In addition, CKAP4 was modified with palmitate at Cys100 by palmitoyl acyltransferase DHHC2 (PMID: 18296695), and palmitoylation was required for CKAP4 localization to PM lipid rafts to promote cancer cell proliferation (PMID: 31744930).

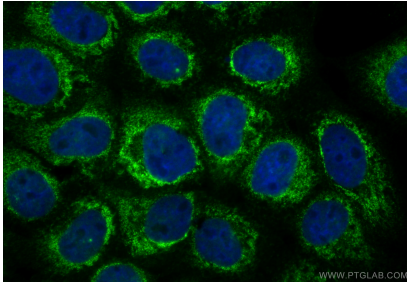
Storage

Storage:
Store at -20°C. Avoid exposure to light. Stable for one year after shipment.
Storage Buffer:
PBS with 50% glycerol, 0.05% Proclin300, 0.5% BSA, pH7.3
Aliquoting is unnecessary for -20°C storage

For technical support and original validation data for this product please contact:
T: 1 (888) 4PTGLAB (1-888-478-4522) (toll free in USA), or 1(312) 455-8498 (outside USA)
E: proteintech@ptglab.com
W: ptglab.com

This product is exclusively available under Proteintech Group brand and is not available to purchase from any other manufacturer.

Selected Validation Data



Immunofluorescent analysis of (4% PFA) fixed A431 cells using CoraLite® Plus 488 CKAP4 antibody (CL488-84485-4, Clone: 241871B6) at dilution of 1:200.