

For Research Use Only

CoraLite® Plus 488-conjugated PQBP1 Recombinant antibody

Catalog Number: CL488-84491-6



Basic Information

Catalog Number:	GenBank Accession Number:	Purification Method:
CL488-84491-6	BC012358	Protein A purification
Size:	GeneID (NCBI):	CloneNo.:
100ul , Concentration: 1000 ug/ml by Nanodrop;	10084	241901B11
Source:	UNIPROT ID:	Recommended Dilutions:
Rabbit	O60828	IF/ICC 1:50-1:500
Isotype:	Full Name:	Excitation/Emission maxima wavelengths:
IgG	polyglutamine binding protein 1	493 nm / 522 nm
Immunogen Catalog Number:	Calculated MW:	
AG9329	265 aa, 30 kDa	
	Observed MW:	
	30-32 kDa	

Applications

Tested Applications:	Positive Controls:
IF/ICC	IF/ICC : HeLa cells,
Species Specificity:	
human	

Background Information

PQBP1 (Polyglutamine-binding protein 1) is also named as NPW38 and JM26. PQBP1 senses extrinsic tau 3R/4R proteins by direct interaction and triggers an innate immune response by activating a cyclic GMP-AMP synthase (cGAS)-Stimulator of interferon genes (STING) pathway (PMID: 34782623). PQBP1 is abundantly expressed in the central nervous system during development. PQBP1 is a component of the precatalytic spliceosome (B complex) that is involved in splicing. PQBP1 was predominantly localized in the cell nucleus. PQBP1 is overexpressed in various cancer types including breast cancer, colon cancer, and glioblastoma (PMID: 38342602).

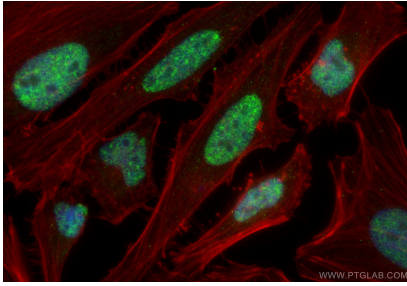
Storage

Storage:
Store at -20°C. Avoid exposure to light. Stable for one year after shipment.
Storage Buffer:
PBS with 50% glycerol, 0.05% Proclin300, 0.5% BSA, pH7.3
Aliquoting is unnecessary for -20°C storage

For technical support and original validation data for this product please contact:
T: 1 (888) 4PTGLAB (1-888-478-4522) (toll free in USA), or 1(312) 455-8498 (outside USA)
E: proteintech@ptglab.com
W: ptglab.com

This product is exclusively available under Proteintech Group brand and is not available to purchase from any other manufacturer.

Selected Validation Data



Immunofluorescent analysis of (4% PFA) fixed HeLa cells using CoraLite® Plus 488 PQBP1 antibody (CL488-84491-6, Clone: 241901B11) at dilution of 1:200, CL594-Phalloidin (red).