

For Research Use Only

# CoraLite® Plus 488-conjugated EPCR/CD201 Recombinant monoclonal antibody

Catalog Number: CL488-84494-2



## Basic Information

Catalog Number: CL488-84494-2	GenBank Accession Number: NM_011171.2	Purification Method: Protein A purification
Size: 100ul , Concentration: 1000 ug/ml by Nanodrop;	GeneID (NCBI): 19124	CloneNo.: 241853A9
Source: Rabbit	UNIPROT ID: Q64695	Recommended Dilutions: IF/ICC: 1:50-1:500
Isotype: IgG	Full Name: protein C receptor, endothelial	Excitation/Emission maxima wavelengths: 493 nm / 522 nm
Immunogen Catalog Number: EG1517	Calculated MW: 27kDa	
	Observed MW: 40-50 kDa	

## Applications

Tested Applications: IF/ICC	Positive Controls: IF/ICC : bEnd.3 cells,
Species Specificity: mouse	

## Background Information

Protein C receptor (PROCR), also known as activated protein C receptor (APC receptor), EPCR, or CD201, is a transmembrane glycoprotein. EPCR promotes the activation of protein C, which has anticoagulant and cytoprotective effects. EPCR facilitates the activation of protein C by the thrombin-thrombomodulin complex but also facilitates APC-mediated cytoprotective impact on cells that involve the activation of protease-activated receptors (PAR) 1 and 3(PMID: 27207424).

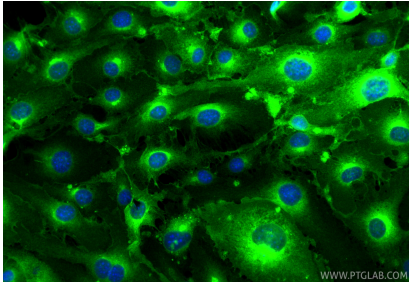
## Storage

**Storage:**  
Store at -20°C. Avoid exposure to light. Stable for one year after shipment.  
**Storage Buffer:**  
PBS with 50% glycerol, 0.05% Proclin300, 0.5% BSA, pH7.3  
Aliquoting is unnecessary for -20°C storage

For technical support and original validation data for this product please contact:  
T: 1 (888) 4PTGLAB (1-888-478-4522) (toll free in USA), or 1(312) 455-8498 (outside USA)  
E: [proteintech@ptglab.com](mailto:proteintech@ptglab.com)  
W: [ptglab.com](http://ptglab.com)

This product is exclusively available under Proteintech Group brand and is not available to purchase from any other manufacturer.

## Selected Validation Data



Immunofluorescent analysis of (4% PFA) fixed bEnd.3 cells using CoraLite® Plus 488 EPCR/CD201 antibody (CL488-84494-2, Clone: 241853A9 ) at dilution of 1:200.