

For Research Use Only

CoraLite® Plus 488-conjugated GLAST/EAAT1 Recombinant monoclonal antibody

Catalog Number: CL488-84497-4



Basic Information

Catalog Number: CL488-84497-4	GenBank Accession Number: BC037310	Purification Method: Protein A purification
Size: 100ul , Concentration: 1000 ug/ml by Nanodrop;	GeneID (NCBI): 6507	CloneNo.: 241907H3
Source: Rabbit	UNIPROT ID: P43003	Recommended Dilutions: IF/ICC: 1:50-1:500
Isotype: IgG	Full Name: solute carrier family 1 (glial high affinity glutamate transporter), member 3	Excitation/Emission maxima wavelengths: 493 nm / 522 nm
Immunogen Catalog Number: AG16962	Calculated MW: 542 aa, 60 kDa	

Applications

Tested Applications: IF/ICC	Positive Controls: IF/ICC : Neuro-2a cells,
Species Specificity: human, mouse	

Background Information

SLC1A3, also known as EAAT-1 or GLAST, is a membrane-bound protein localized in glial cells and pre-synaptic glutamatergic nerve endings. It transports the excitatory neurotransmitters L-glutamate and D-aspartate, which is essential for terminating the postsynaptic action of glutamate. Recently, a correlation between expression/function of glial EAAT-1 and tumor proliferation has been reported. The exceptionally rare expression of EAAT-1 in non-neoplastic choroid plexus (CP) compared to choroid plexus tumors (CPT) may distinguishes neoplastic from normal CP. There are a number of splicing variants of SLC1A3, like GLAST1a and GLAST1b, exist due to the exon skipping. It also undergo glycosylation. Variety of bands can be observed in the western blotting assay: 50-55 kDa represents the unglycosylated GLAST1a or GLAST1b, 65-70 kDa correspond to the glycosylated proteins, larger proteins between 90-130 kDa may be the multimers of SLC1A3. (11086157, 17471058, 12546822)

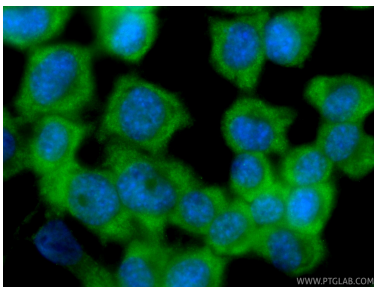
Storage

Storage:
Store at -20°C. Avoid exposure to light. Stable for one year after shipment.
Storage Buffer:
PBS with 50% glycerol, 0.05% Proclin300, 0.5% BSA, pH7.3
Aliquoting is unnecessary for -20°C storage

For technical support and original validation data for this product please contact:
T: 1 (888) 4PTGLAB (1-888-478-4522) (toll free in USA), or 1(312) 455-8498 (outside USA)
E: proteintech@ptglab.com
W: ptglab.com

This product is exclusively available under Proteintech Group brand and is not available to purchase from any other manufacturer.

Selected Validation Data



Immunofluorescent analysis of (-20°C Ethanol) fixed Neuro-2a cells using CoraLite® Plus 488 GLAST/EAAT1 antibody (CL488-84497-4, Clone: 241907H3) at dilution of 1:200.