

For Research Use Only

CoraLite® Plus 488-conjugated SELPLG/CD162 Recombinant antibody

Catalog Number: CL488-84500



Basic Information

Catalog Number: CL488-84500	GenBank Accession Number: BC029782	Purification Method: Protein A purification
Size: 100ul , Concentration: 1000 µg/ml by Nanodrop;	GeneID (NCBI): 6404	CloneNo.: 241297G10
Source: Rabbit	UNIPROT ID: Q14242	Recommended Dilutions: IF/ICC 1:50-1:500
Isotype: IgG	Full Name: selectin P ligand	Excitation/Emission maxima wavelengths: 493 nm / 522 nm
	Calculated MW: 412 aa, 43 kDa	

Applications

Tested Applications: IF/ICC	Positive Controls: IF/ICC : Jurkat cells,
Species Specificity: human	

Background Information

SELPLG (selectin P ligand), also known as CD162 or PSGL-1, is a 120 kDa type I transmembrane mucin-like glycoprotein. It is an adhesion molecule expressed on the surface of neutrophils, monocytes, and most lymphocytes as a homodimer of approximately 230-250 kDa (PMID: 7545173; 1378449; 9353350). SELPLG plays a critical role in the early stages of inflammation due to its ability to bind E-selectin (CD62E), L-selectin (CD62L), and P-selectin (CD62P) (PMID: 35597982).

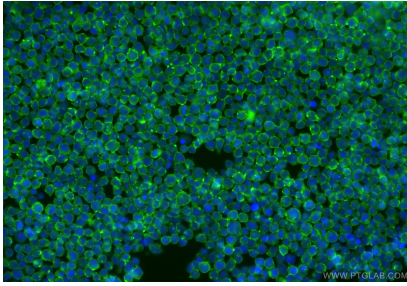
Storage

Storage:
Store at -20°C. Avoid exposure to light. Stable for one year after shipment.
Storage Buffer:
PBS with 50% Glycerol, 0.05% Proclin300, 0.5% BSA, pH 7.3.
Aliquoting is unnecessary for -20°C storage

For technical support and original validation data for this product please contact:
T: 1 (888) 4PTGLAB (1-888-478-4522) (toll free in USA), or 1(312) 455-8498 (outside USA)
E: proteintech@ptglab.com
W: ptglab.com

This product is exclusively available under Proteintech Group brand and is not available to purchase from any other manufacturer.

Selected Validation Data



Immunofluorescent analysis of (4% PFA) fixed Jurkat cells using CoraLite® Plus 488 SELPLG/CD162 antibody (CL488-84500, Clone: 241297G10) at dilution of 1:200.