

For Research Use Only

# CoraLite® Plus 488-conjugated MCM2 Recombinant antibody

Catalog Number: CL488-84511-2



## Basic Information

### Catalog Number:

CL488-84511-2

### Size:

100ul , Concentration: 1000 ug/ml by  
Nanodrop;

### Source:

Rabbit

### Isotype:

IgG

### Immunogen Catalog Number:

AG0798

### GenBank Accession Number:

BC007670

### GeneID (NCBI):

4171

### UNIPROT ID:

P49736

### Full Name:

minichromosome maintenance  
complex component 2

### Calculated MW:

102 kDa

### Observed MW:

116-125 kDa

### Purification Method:

Protein A purification

### CloneNo.:

241968D3

### Recommended Dilutions:

IF/ICC: 1:50-1:500

### Excitation/Emission maxima wavelengths:

493 nm / 522 nm

## Applications

### Tested Applications:

IF/ICC

### Species Specificity:

human

### Positive Controls:

IF/ICC : HeLa cells, MCF-7 cells

## Background Information

The MCM2-7 complex forms the core of the replicative helicase which acts as the molecular motor that uses ATP binding and hydrolysis to fuel the unwinding of double-stranded DNA at the replication fork in eukaryotes. This complex is the putative replicative helicase essential for 'once per cell cycle' DNA replication initiation and elongation in eukaryotic cells. MCM2, also named CDCL1 and BM28, is a human nuclear protein that plays an important role in 2 crucial steps of the cell cycle, namely, onset of DNA replication and cell division.

## Storage

### Storage:

Store at -20°C. Avoid exposure to light. Stable for one year after shipment.

### Storage Buffer:

PBS with 50% glycerol, 0.05% Proclin300, 0.5% BSA, pH7.3

Aliquoting is unnecessary for -20°C storage

For technical support and original validation data for this product please contact:

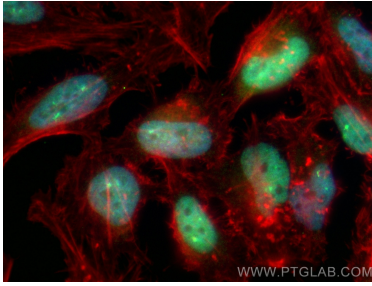
T: 1 (888) 4PTGLAB (1-888-478-4522) (toll free  
in USA), or 1(312) 455-8498 (outside USA)

E: [proteintech@ptglab.com](mailto:proteintech@ptglab.com)  
W: [ptglab.com](http://ptglab.com)

This product is exclusively available under Proteintech  
Group brand and is not available to purchase from any  
other manufacturer.

---

## Selected Validation Data



Immunofluorescent analysis of (4% PFA) fixed HeLa cells using CoraLite® Plus 488 MCM2 antibody (CL488-84511-2, Clone: 241968D3 ) at dilution of 1:200, CL594-Phalloidin (red).