

For Research Use Only

CoraLite® Plus 488-conjugated TRAF2 Recombinant antibody

Catalog Number: CL488-84581-3



Basic Information

| | | |
|--|---|---|
| Catalog Number: CL488-84581-3 | GenBank Accession Number: BC032410 | Purification Method: Protein A purification |
| Size: 100ul , Concentration: 1000 ug/ml by Nanodrop; | GeneID (NCBI): 7186 | CloneNo.: 241899A2 |
| Source: Rabbit | UNIPROT ID: Q12933 | Recommended Dilutions: IF/ICC: 1:50-1:500 |
| Isotype: IgG | Full Name: TNF receptor-associated factor 2 | Excitation/Emission maxima wavelengths: 493 nm / 522 nm |
| Immunogen Catalog Number: AG25387 | Calculated MW: 56 kDa | |
| | Observed MW: 53 kDa | |

Applications

| | |
|---|---|
| Tested Applications: IF/ICC | Positive Controls: IF/ICC : HeLa cells, |
| Species Specificity: human, mouse | |

Background Information

Tumor necrosis factor (TNF) receptor-associated factor-2 (TRAF2) is one of the members of the TRAF superfamily protein, which is an intracellular junction protein with E3 ligase activity. TRAF2 mediates and regulates the activation of nuclear factor kappa B (NF-κB) and microtubule-associated protein kinase (MAPK) signaling pathways by binding to TNFR family proteins. Recent studies have demonstrated that TRAF2 regulates tumor progression by through multiple pathways.

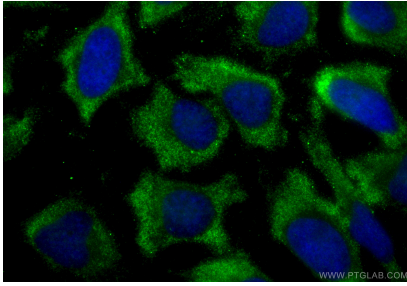
Storage

Storage:
Store at -20°C. Avoid exposure to light. Stable for one year after shipment.
Storage Buffer:
PBS with 50% glycerol, 0.05% Proclin300, 0.5% BSA, pH7.3
Aliquoting is unnecessary for -20°C storage

For technical support and original validation data for this product please contact:
T: 1 (888) 4PTGLAB (1-888-478-4522) (toll free in USA), or 1(312) 455-8498 (outside USA)
E: proteintech@ptglab.com
W: ptglab.com

This product is exclusively available under Proteintech Group brand and is not available to purchase from any other manufacturer.

Selected Validation Data



Immunofluorescent analysis of (-20°C Ethanol) fixed HeLa cells using CoraLite® Plus 488 TRAF2 antibody (CL488-84581-3, Clone: 241899A2) at dilution of 1:200.