

For Research Use Only

CoraLite® Plus 488-conjugated MYH8-Specific Recombinant monoclonal antibody

Catalog Number: **CL488-84594**



Basic Information

Catalog Number:

CL488-84594

Size:

100ul , Concentration: 1000 ug/ml by Nanodrop;

Source:

Rabbit

Isotype:

IgG

GenBank Accession Number:

NM_002472

GeneID (NCBI):

4626

UNIPROT ID:

P13535

Full Name:

myosin, heavy chain 8, skeletal muscle, perinatal

Calculated MW:

223 kDa

Observed MW:

220-230 kDa

Purification Method:

Protein A purification

CloneNo.:

241539A1

Recommended Dilutions:

IF-P: 1:50-1:500

Excitation/Emission maxima wavelengths:

493 nm / 522 nm

Applications

Tested Applications:

IF-P

Species Specificity:

human, rat

Positive Controls:

IF-P: mouse skeletal muscle tissue,

Storage

Storage:

Store at -20°C. Avoid exposure to light. Stable for one year after shipment.

Storage Buffer:

PBS with 50% glycerol, 0.05% Proclin300, 0.5% BSA, pH7.3

Aliquoting is unnecessary for -20°C storage

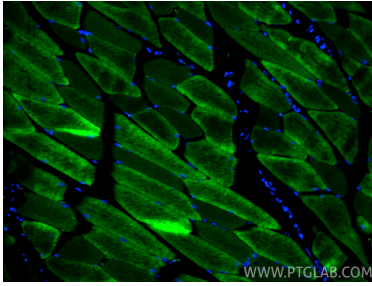
For technical support and original validation data for this product please contact:

T: 1 (888) 4PTGLAB (1-888-478-4522) (toll free in USA), or 1(312) 455-8498 (outside USA)

E: proteintech@ptglab.com
W: ptglab.com

This product is exclusively available under Proteintech Group brand and is not available to purchase from any other manufacturer.

Selected Validation Data



Immunofluorescent analysis of (4% PFA) fixed paraffin-embedded mouse skeletal muscle tissue using CoraLite® Plus 488 MYH8-Specific antibody (CL488-84594, Clone: 241539A1) at dilution of 1:200. Heat mediated antigen retrieval with Tris-EDTA buffer (pH 9.0).