

For Research Use Only

CoraLite® Plus 488-conjugated PSMA/GCPII Recombinant monoclonal antibody

Catalog Number: CL488-84615-2



Basic Information

Catalog Number: CL488-84615-2	GenBank Accession Number: NM_004476.3	Purification Method: Protein A purification
Size: 100ul , Concentration: 1000 ug/ml by Nanodrop;	GeneID (NCBI): 2346	CloneNo.: 242026F4
Source: Rabbit	UNIPROT ID: Q04609	Recommended Dilutions: IF/ICC: 1:50-1:500
Isotype: IgG	Full Name: folate hydrolase (prostate-specific membrane antigen) 1	Excitation/Emission maxima wavelengths: 493 nm / 522 nm
Immunogen Catalog Number: EG0216	Calculated MW: 84KD	
	Observed MW: 100 kDa	

Applications

Tested Applications: IF/ICC	Positive Controls: IF/ICC : LNCaP cells,
Species Specificity: human	

Background Information

Prostate-specific membrane antigen (PSMA), also known as glutamate carboxypeptidase II (GCPII), is a type II transmembrane glycoprotein that has gained significant attention in the field of prostate cancer (PCa) diagnostics and therapeutics. PSMA is highly overexpressed in prostate cancer tissue, especially in aggressive, androgen-deprived, metastatic, and hormone-refractory prostate cancers. Up to 95% of prostate adenocarcinomas express PSMA receptors on their surface. Physiological expression of PSMA is observed in normal prostate epithelium, duodenum, colon, renal tubules, and sympathetic ganglia. It is also found in other tissues such as the salivary glands, lacrimal glands, and various parts of the gastrointestinal tract, though at lower levels.

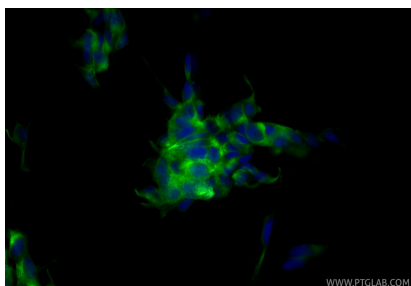
Storage

Storage:
Store at -20°C. Avoid exposure to light. Stable for one year after shipment.
Storage Buffer:
PBS with 50% glycerol, 0.05% Proclin300, 0.5% BSA, pH7.3
Aliquoting is unnecessary for -20°C storage

For technical support and original validation data for this product please contact:
T: 1 (888) 4PTGLAB (1-888-478-4522) (toll free in USA), or 1(312) 455-8498 (outside USA)
E: proteintech@ptglab.com
W: ptglab.com

This product is exclusively available under Proteintech Group brand and is not available to purchase from any other manufacturer.

Selected Validation Data



Immunofluorescent analysis of (4% PFA) fixed LNCaP cells using CoraLite® Plus 488 PSMA/GCPII antibody (CL488-84615-2, Clone: 242026F4) at dilution of 1:200.