

For Research Use Only

# CoraLite® Plus 488-conjugated Syntaxin 6 Recombinant antibody

Catalog Number:CL488-84627-5



## Basic Information

Catalog Number:

CL488-84627-5

GenBank Accession Number:

BC009944

Purification Method:

Protein A purification

Size:

100ul , Concentration: 1000 ug/ml by Nanodrop;

GeneID (NCBI):

10228

CloneNo.:

242100A9

Source:

Rabbit

UNIPROT ID:

O43752

Recommended Dilutions:

IF/ICC 1:50-1:500

Isotype:

IgG

Full Name:

syntaxin 6

Excitation/Emission maxima wavelengths:

493 nm / 522 nm

Immunogen Catalog Number:

AG1284

Calculated MW:

29 kDa

Observed MW:

32 kDa

## Applications

Tested Applications:

IF/ICC

Positive Controls:

IF/ICC : PC-12 cells,

Species Specificity:

human, mouse, rat

## Background Information

Syntaxin-6 (STX6) is a SNARE protein located in the trans-Golgi network (TGN) and endosomes. It associates with a variety of SNARE proteins and is involved in intracellular vesicle trafficking. STX6 is required for sorting proteins from endosomes toward either the TGN or lysosomes.

## Storage

Storage:

Store at -20°C. Avoid exposure to light. Stable for one year after shipment.

Storage Buffer:

PBS with 50% glycerol, 0.05% Proclin300, 0.5% BSA, pH7.3

Aliquoting is unnecessary for -20°C storage

For technical support and original validation data for this product please contact:

T: 1 (888) 4PTGLAB (1-888-478-4522) (toll free in USA), or 1(312) 455-8498 (outside USA)

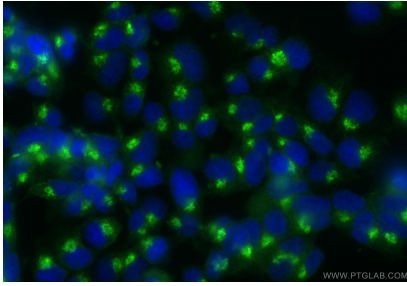
E: [proteintech@ptglab.com](mailto:proteintech@ptglab.com)

W: [ptglab.com](http://ptglab.com)

This product is exclusively available under Proteintech Group brand and is not available to purchase from any other manufacturer.

---

## Selected Validation Data



Immunofluorescent analysis of (4% PFA) fixed PC-12 cells using CoraLite® Plus 488 Syntaxin 6 antibody (CL488-84627-5, Clone: 242100A9 ) at dilution of 1:200.