

For Research Use Only

# CoraLite® Plus 488-conjugated TERT Recombinant antibody

Catalog Number: CL488-84636



## Basic Information

|  |   |   |
|--|---|---|
| <b>Catalog Number:</b><br>CL488-84636                          | <b>GenBank Accession Number:</b><br>NM_198255         | <b>Purification Method:</b><br>Protein A purification             |
| <b>Size:</b><br>100ul , Concentration: 1000 µg/ml by Nanodrop; | <b>GeneID (NCBI):</b><br>7015                         | <b>CloneNo.:</b><br>241074H2                                      |
| <b>Source:</b><br>Rabbit                                       | <b>UNIPROT ID:</b><br>O14746                          | <b>Recommended Dilutions:</b><br>IF/ICC 1:50-1:500                |
| <b>Isotype:</b><br>IgG   | <b>Full Name:</b><br>telomerase reverse transcriptase | <b>Excitation/Emission maxima wavelengths:</b><br>493 nm / 522 nm |
|  | <b>Calculated MW:</b><br>127 kDa                      |   |

## Applications

|                                       |  |
|---------------------------------------|--|
| <b>Tested Applications:</b><br>IF/ICC | <b>Positive Controls:</b><br>IF/ICC : MCF-7 cells, |
| <b>Species Specificity:</b><br>human  |  |

## Background Information

Telomerase reverse transcriptase (TERT) is a catalytic subunit of telomerase. TERT plays a key role in cancer formation, ensuring chromosomal stability by maintaining telomere length, and allowing cells to avert senescence. It constitutes a limiting factor for formation of the telomerase complex in cancer cells. TERT is one of two major components of the larger telomerase complex, which extends telomeres by adding specific short repetitive DNA sequences. Telomerase is a ribonucleoprotein enzyme essential for the replication of chromosome termini in most eukaryotes. Active in progenitor and cancer cells. Inactive, or very low activity, in normal somatic cells.

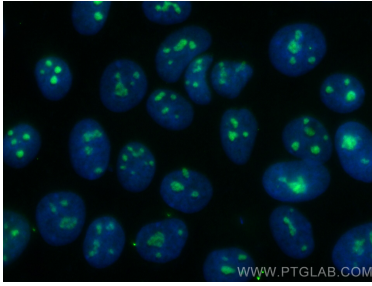
## Storage

**Storage:**  
Store at -20°C. Avoid exposure to light. Stable for one year after shipment.  
**Storage Buffer:**  
PBS with 50% Glycerol, 0.05% Proclin300, 0.5% BSA, pH 7.3.  
Aliquoting is unnecessary for -20°C storage

For technical support and original validation data for this product please contact:  
T: 1 (888) 4PTGLAB (1-888-478-4522) (toll free in USA), or 1(312) 455-8498 (outside USA)  
E: [proteintech@ptglab.com](mailto:proteintech@ptglab.com)  
W: [ptglab.com](http://ptglab.com)

This product is exclusively available under Proteintech Group brand and is not available to purchase from any other manufacturer.

## Selected Validation Data



Immunofluorescent analysis of (4% PFA) fixed MCF-7 cells using CoraLite® Plus 488 TERT antibody (CL488-84636, Clone: 241074H2 ) at dilution of 1:200.