

For Research Use Only

CoraLite® Plus 488-conjugated CD45.2 Recombinant monoclonal antibody

Catalog Number: CL488-84637



Basic Information

Catalog Number:

CL488-84637

Size:

100ul , Concentration: 1000 ug/ml by
Nanodrop;

Source:

Rabbit

Isotype:

IgG

Immunogen Catalog Number:

EG2467

GenBank Accession Number:

GeneID (NCBI):

19264

Full Name:

protein tyrosine phosphatase,
receptor type, C

Observed MW:

200-220 kDa

Purification Method:

Protein A purification

CloneNo.:

241543F9

Recommended Dilutions:

IF-P: 1:50-1:500

Excitation/Emission maxima
wavelengths:

493 nm / 522 nm

Applications

Tested Applications:

IF-P

Species Specificity:

mouse

Positive Controls:

IF-P : mouse spleen tissue,

Background Information

CD45, also known as protein tyrosine phosphatase, receptor type C, is a type I transmembrane protein expressed on the surface of all haematopoietic cells with the exception of erythrocytes and platelets (PMID: 3489673; 28615666). CD45 is a pan-haematopoietic cell marker and has been shown to be essential for T- and B-cell activation and signalling (PMID: 9429890; 16378097). Allelic variants of mouse CD45, CD45.1 (Ly5.1) and CD45.2 (Ly5.1), have been established as a marker system to track haematopoietic cells following congenic mouse bone marrow transplants (PMID: 28615666). CD45.2 is the common form and is expressed by most of the established strains, while CD45.1 is found in only a few like the SJL mouse strain (PMID: 3489673).

Storage

Storage:

Store at -20°C. Avoid exposure to light. Stable for one year after shipment.

Storage Buffer:

PBS with 50% glycerol, 0.05% Proclin300, 0.5% BSA, pH7.3

Aliquoting is unnecessary for -20°C storage

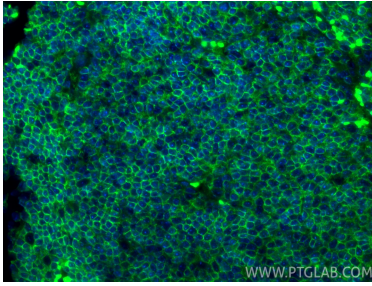
For technical support and original validation data for this product please contact:

T: 1 (888) 4PTGLAB (1-888-478-4522) (toll free
in USA), or 1(312) 455-8498 (outside USA)

E: proteintech@ptglab.com
W: ptglab.com

This product is exclusively available under Proteintech Group brand and is not available to purchase from any other manufacturer.

Selected Validation Data



Immunofluorescent analysis of (4% PFA) fixed paraffin-embedded BALB/ c mouse spleen tissue using CoraLite® Plus 488 CD45.2 antibody (CL488-84637, Clone: 241543F9) at dilution of 1:200. Heat mediated antigen retrieval with Tris-EDTA buffer (pH 9.0).