

For Research Use Only

CoraLite® Plus 488-conjugated LAIR1 Recombinant antibody

Catalog Number: CL488-84677-4



Basic Information

Catalog Number: CL488-84677-4	GenBank Accession Number: BC027899	Purification Method: Protein A purification
Size: 100ul , Concentration: 1000 ug/ml by Nanodrop;	GeneID (NCBI): 3903	CloneNo.: 241805C2
Source: Rabbit	UNIPROT ID: Q6GTX8	Recommended Dilutions: IF/ICC: 1:50-1:500
Isotype: IgG	Full Name: leukocyte-associated immunoglobulin-like receptor 1	Excitation/Emission maxima wavelengths: 493 nm / 522 nm
Immunogen Catalog Number: EG2329	Calculated MW: 287 aa, 31 kDa	

Applications

Tested Applications: IF/ICC	Positive Controls: IF/ICC : THP-1 cells,
Species Specificity: human	

Background Information

Leukocyte-associated immunoglobulin-like receptor 1 (LAIR1) is a transmembrane glycoprotein with a single immunoglobulin-like domain and a cytoplasmic tail containing two immune receptor tyrosine-based inhibitory motifs (PMID: 9285412). LAIR1 is expressed on the majority of human PBMCs, including NK, T, B, monocytes, and dendritic cells, as well as the majority of thymocytes (PMID: 10229813). It functions as an inhibitory receptor that plays a constitutive negative regulatory role on cytolytic function of NK cells, B cells and T cells. LAIR1 is a collagen receptor (PMID: 16754721). Tumor-expressed collagens can modulate immune cell function through the inhibitory collagen receptor LAIR1 (PMID: 21955987).

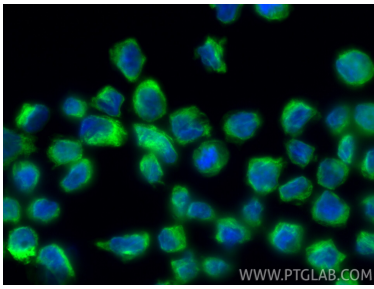
Storage

Storage:
Store at -20°C. Avoid exposure to light. Stable for one year after shipment.
Storage Buffer:
PBS with 50% glycerol, 0.05% Proclin300, 0.5% BSA, pH7.3
Aliquoting is unnecessary for -20°C storage

For technical support and original validation data for this product please contact:
T: 1 (888) 4PTGLAB (1-888-478-4522) (toll free in USA), or 1(312) 455-8498 (outside USA)
E: proteintech@ptglab.com
W: ptglab.com

This product is exclusively available under Proteintech Group brand and is not available to purchase from any other manufacturer.

Selected Validation Data



Immunofluorescent analysis of (4% PFA) fixed THP-1 cells using CoraLite® Plus 488 LAIR1 antibody (CL488-84677-4, Clone: 241805C2) at dilution of 1:200.