

For Research Use Only

CoraLite® Plus 488-conjugated AEG-1/MTDH Recombinant antibody

Catalog Number: CL488-84686-4



Basic Information

Catalog Number: CL488-84686-4	GenBank Accession Number: BC045642	Purification Method: Protein A purification
Size: 100ul , Concentration: 1000 ug/ml by Nanodrop;	GeneID (NCBI): 92140	CloneNo.: 242110B5
Source: Rabbit	UNIPROT ID: Q86UE4	Recommended Dilutions: IF/ICC: 1:50-1:500
Isotype: IgG	Full Name: metadherin	Excitation/Emission maxima wavelengths: 493 nm / 522 nm
Immunogen Catalog Number: AG4840	Calculated MW: 582 aa, 64 kDa	
	Observed MW: 75 kDa	

Applications

Tested Applications: IF/ICC	Positive Controls: IF/ICC : A431 cells,
Species Specificity: human	

Background Information

MTDH, also known as AEG-1, is a single-pass transmembrane protein with its gene located at chromosome 8q22, the abnormalities of which have been identified in several tumor types. MTDH is overexpressed in a number of malignancies, such as breast cancer, malignant glioma, and neuroblastoma, and its overexpression is associated with poor clinical outcome. MTDH plays an important role in the regulation of carcinogenesis and tumor progression.

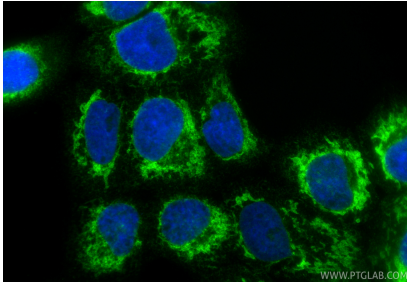
Storage

Storage:
Store at -20°C. Avoid exposure to light. Stable for one year after shipment.
Storage Buffer:
PBS with 50% glycerol, 0.05% Proclin300, 0.5% BSA, pH7.3
Aliquoting is unnecessary for -20°C storage

For technical support and original validation data for this product please contact:
T: 1 (888) 4PTGLAB (1-888-478-4522) (toll free in USA), or 1(312) 455-8498 (outside USA)
E: proteintech@ptglab.com
W: ptglab.com

This product is exclusively available under Proteintech Group brand and is not available to purchase from any other manufacturer.

Selected Validation Data



Immunofluorescent analysis of (4% PFA) fixed A431 cells using CoraLite® Plus 488 AEG-1/MTDH antibody (CL488-84686-4, Clone: 242110B5) at dilution of 1:200.