

For Research Use Only

CoraLite® Plus 488-conjugated AGGF1 Recombinant antibody

Catalog Number: CL488-84715-4



Basic Information

Catalog Number: CL488-84715-4	GenBank Accession Number: BC029382	Purification Method: Protein A purification
Size: 100ul , Concentration: 1000 ug/ml by Nanodrop;	GeneID (NCBI): 55109	CloneNo.: 242264F4
Source: Rabbit	UNIPROT ID: Q8N302	Recommended Dilutions: IF/ICC: 1:50-1:500
Isotype: IgG	Full Name: angiogenic factor with G patch and FHA domains 1	Excitation/Emission maxima wavelengths: 493 nm / 522 nm
Immunogen Catalog Number: AG2497	Calculated MW: 714 aa, 81 kDa	

Applications

Tested Applications: IF/ICC	Positive Controls: IF/ICC : HEK-293 cells,
Species Specificity: human	

Background Information

The angiogenic factor gene, AGGF1 (or VG5Q), is identified as a candidate susceptibility gene for Klippel-Trenaunay syndrome (KTS) which is a severe congenital disorder characterized by capillary malformations, venous malformations or varicose veins, and hypertrophy of the affected tissues. AGGF1 protein can bind to endothelial cells and promote cell proliferation. AGGF1 shows strong expression in blood vessels and is secreted as vessel formation is initiated. Regulation of AGGF1 by GATA1 may play roles in endothelial cell biology and angiogenesis.

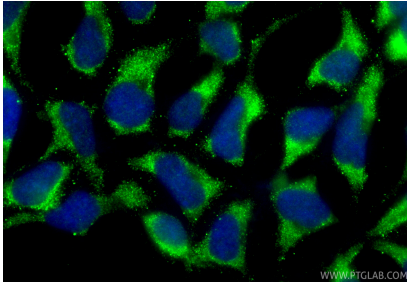
Storage

Storage:
Store at -20°C. Avoid exposure to light. Stable for one year after shipment.
Storage Buffer:
PBS with 50% glycerol, 0.05% Proclin300, 0.5% BSA, pH7.3
Aliquoting is unnecessary for -20°C storage

For technical support and original validation data for this product please contact:
T: 1 (888) 4PTGLAB (1-888-478-4522) (toll free in USA), or 1(312) 455-8498 (outside USA)
E: proteintech@ptglab.com
W: ptglab.com

This product is exclusively available under Proteintech Group brand and is not available to purchase from any other manufacturer.

Selected Validation Data



Immunofluorescent analysis of (-20°C Ethanol)
fixed HEK-293 cells using CoraLite® Plus 488
AGGF1 antibody (CL488-84715-4, Clone: 242264F4
) at dilution of 1:200.