

For Research Use Only



# CoraLite® Plus 488-conjugated C11orf68 Recombinant monoclonal antibody

Catalog Number: **CL488-84725-5**

## Basic Information

<b>Catalog Number:</b> CL488-84725-5	<b>GenBank Accession Number:</b> BC010512	<b>Purification Method:</b> Protein A purification
<b>Size:</b> 100ul , Concentration: 1000 ug/ml by Nanodrop;	<b>GeneID (NCBI):</b> 83638	<b>CloneNo.:</b> 242221C11
<b>Source:</b> Rabbit	<b>UNIPROT ID:</b> Q9H3H3	<b>Recommended Dilutions:</b> IF/ICC: 1:50-1:500
<b>Isotype:</b> IgG	<b>Full Name:</b> chromosome 11 open reading frame 68	<b>Excitation/Emission maxima wavelengths:</b> 493 nm / 522 nm
<b>Immunogen Catalog Number:</b> AG36023	<b>Observed MW:</b> 35 kDa	

## Applications

<b>Tested Applications:</b> IF/ICC	<b>Positive Controls:</b> IF/ICC : A431 cells,
<b>Species Specificity:</b> human	

## Background Information

BLES03 (basophilic leukemia-expressed protein 03) is a human protein of unknown function. Recent studies have shown that BLES03 is a novel eukaryotic phosphothreonine cleavage enzyme involved in the biosynthesis of dehydrogenated amino acids. The crystal structure of BLES03 has been resolved by single-wavelength anomalous scattering (SAD) with a resolution of 2.5 Å.

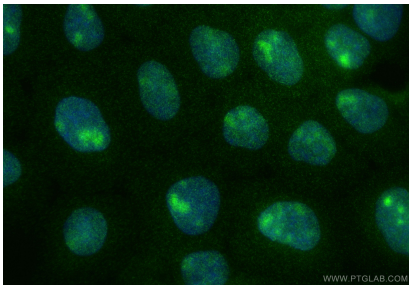
## Storage

**Storage:**  
Store at -20°C. Avoid exposure to light. Stable for one year after shipment.  
**Storage Buffer:**  
PBS with 50% glycerol, 0.05% Proclin300, 0.5% BSA, pH7.3  
**Aliquoting is unnecessary for -20°C storage**

For technical support and original validation data for this product please contact:  
T: 1 (888) 4PTGLAB (1-888-478-4522) (toll free in USA), or 1(312) 455-8498 (outside USA)  
E: [proteintech@ptglab.com](mailto:proteintech@ptglab.com)  
W: [ptglab.com](http://ptglab.com)

This product is exclusively available under Proteintech Group brand and is not available to purchase from any other manufacturer.

Selected Validation Data



N/A