

For Research Use Only

CoraLite®488-conjugated RAB7A Recombinant antibody

Catalog Number:CL488-84741



Basic Information

Catalog Number:

CL488-84741

Size:

100ul , Concentration: 1000 ug/ml by
Nanodrop;

Source:

Rabbit

Isotype:

IgG

GenBank Accession Number:

NM_004637

GeneID (NCBI):

7879

UNIPROT ID:

P51149

Full Name:

RAB7A, member RAS oncogene family

Calculated MW:

23 kDa

Observed MW:

23 kDa

Purification Method:

Protein A purification

CloneNo.:

241948B4

Recommended Dilutions:

FC (Intra): 0.4 ug per 10⁶ cells in a
100 µl suspension

Excitation/Emission maxima
wavelengths:

491 nm / 516 nm

Applications

Tested Applications:

FC (Intra), ELISA

Species Specificity:

human, mouse, rat

Positive Controls:

FC (Intra) : A431 cells,

Background Information

RAB7A, also named as RAB7, belongs to the small GTPase superfamily and Rab family. It is involved in late endocytic transport. RAB7A contributes to the maturation of phagosomes (acidification). Defects in RAB7A are the cause of Charcot-Marie-Tooth disease type 2B (CMT2B). This antibody is specific to RAB7A.

Storage

Storage:

Store at -20°C. Avoid exposure to light. Stable for one year after shipment.

Storage Buffer:

PBS with 50% glycerol, 0.05% Proclin300, 0.5% BSA, pH7.3

Aliquoting is unnecessary for -20°C storage

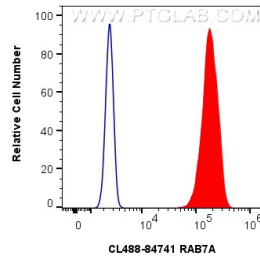
For technical support and original validation data for this product please contact:

T: 1 (888) 4PTGLAB (1-888-478-4522) (toll free
in USA), or 1(312) 455-8498 (outside USA)

E: proteintech@ptglab.com
W: ptglab.com

This product is exclusively available under Proteintech Group brand and is not available to purchase from any other manufacturer.

Selected Validation Data



1×10^6 A431 cells were intracellularly stained with 0.4 μ g CoraLite® 488-conjugated RAB7A Recombinant antibody (CL488-84741, Clone: 241948B4) (red), or 0.4 μ g CoraLite® Plus 488 Rabbit IgG Isotype Control RecAb (CL488-98136, Clone: 240953C9) (blue). Cells were fixed with 4% PFA and permeabilized with Flow Cytometry Perm Buffer (PF00011-C).