

For Research Use Only

CoraLite® Plus 488-conjugated APOE Recombinant antibody

Catalog Number: CL488-84775-7



Basic Information

Catalog Number:	GenBank Accession Number:	Purification Method:
CL488-84775-7	BC003557	Protein A purification
Size:	GeneID (NCBI):	CloneNo.:
100ul , Concentration: 1000 ug/ml by Nanodrop;	348	242310B2
Source:	UNIPROT ID:	Recommended Dilutions:
Rabbit	P02649	IF/ICC: 1:50-1:500
Isotype:	Full Name:	Excitation/Emission maxima wavelengths:
IgG	Apolipoprotein E	493 nm / 522 nm
Immunogen Catalog Number:	Calculated MW:	
EG0448	36 kDa	

Applications

Tested Applications:	Positive Controls:
IF/ICC	IF/ICC : HepG2 cells,
Species Specificity:	
human, mouse	

Background Information

The apolipoprotein E (APOE) is a 299-amino acid polypeptide that mediates the binding, internalization, and catabolism of lipoprotein particles, and also serves as a ligand for the LDL (apo B/E) receptor and for the specific apo-E receptor (chylomicron remnant) of hepatic tissues. The very strong association of the APOE $\epsilon 4$ allele with AD risk and its role in the accumulation of amyloid β in brains of people and animal models solidify the biological relevance of APOE isoforms but do not provide mechanistic insight (PMID: 9831633).

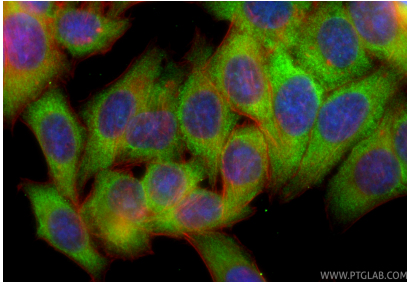
Storage

Storage:
Store at -20°C. Avoid exposure to light. Stable for one year after shipment.
Storage Buffer:
PBS with 50% glycerol, 0.05% Proclin300, 0.5% BSA, pH7.3
Aliquoting is unnecessary for -20°C storage

For technical support and original validation data for this product please contact:
T: 1 (888) 4PTGLAB (1-888-478-4522) (toll free in USA), or 1(312) 455-8498 (outside USA)
E: proteintech@ptglab.com
W: ptglab.com

This product is exclusively available under Proteintech Group brand and is not available to purchase from any other manufacturer.

Selected Validation Data



Immunofluorescent analysis of (-20°C Ethanol) fixed HepG2 cells using CoraLite® Plus 488 APOE antibody (CL488-84775-7, Clone: 242310B2) at dilution of 1:200, CL594-Phalloidin (red).