

For Research Use Only

CoraLite® Plus 488-conjugated GOLIM4 Recombinant antibody

Catalog Number:CL488-84818-5



Basic Information

Catalog Number: CL488-84818-5	GenBank Accession Number: NM_014498	Purification Method: Protein A purification
Size: 100ul , Concentration: 1000 ug/ml by Nanodrop;	GeneID (NCBI): 27333	CloneNo.: 242323F4
Source: Rabbit	UNIPROT ID: O00461	Recommended Dilutions: IF/ICC 1:50-1:500
Isotype: IgG	Full Name: golgi integral membrane protein 4	Excitation/Emission maxima wavelengths: 493 nm / 522 nm
Immunogen Catalog Number: AG34962	Calculated MW: 82 kDa	
	Observed MW: 130-140 kDa	

Applications

Tested Applications: IF/ICC	Positive Controls: IF/ICC : HeLa cells,
Species Specificity: human, mouse	

Background Information

Golgi integral membrane protein 4 (GOLIM4) is a 130-kDa membrane protein that is integrated into the cis/medial Golgi apparatus, which is a kind II Golgi protein. GOLIM4 is a Golgi protein that circulates between Golgi apparatus and endosomes, and its shuttle is pH sensitive(PMID:30068697).

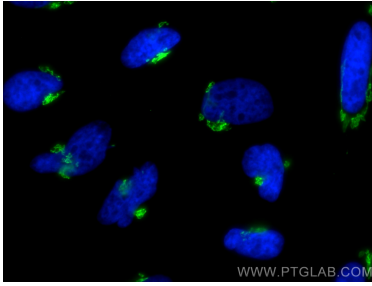
Storage

Storage:
Store at -20°C. Avoid exposure to light. Stable for one year after shipment.
Storage Buffer:
PBS with 50% glycerol, 0.05% Proclin300, 0.5% BSA, pH7.3
Aliquoting is unnecessary for -20°C storage

For technical support and original validation data for this product please contact:
T: 1 (888) 4PTGLAB (1-888-478-4522) (toll free in USA), or 1(312) 455-8498 (outside USA)
E: proteintech@ptglab.com
W: ptglab.com

This product is exclusively available under Proteintech Group brand and is not available to purchase from any other manufacturer.

Selected Validation Data



Immunofluorescent analysis of (4% PFA) fixed HeLa cells using CoraLite® Plus 488 GOLIM4 antibody (CL488-84818-5, Clone: 242323F4) at dilution of 1:200.