

For Research Use Only

# CoraLite® Plus 488-conjugated Phospho-POLR2A (Ser5) Recombinant monoclonal antibody

Catalog Number: CL488-84834



## Basic Information

Catalog Number:

CL488-84834

Size:

100ul , Concentration: 1000 ug/ml by Nanodrop;

Source:

Rabbit

Isotype:

IgG

GenBank Accession Number:

BC137231

GeneID (NCBI):

5430

UNIPROT ID:

P24928

Full Name:

polymerase (RNA) II (DNA directed) polypeptide A, 220kDa

Calculated MW:

1970 aa, 217 kDa

Observed MW:

270 kDa

Purification Method:

Protein A purification

CloneNo.:

241914E5

Recommended Dilutions:

FC (Intra): 0.25 ug per 10<sup>6</sup> cells in a 100 µl suspension

Excitation/Emission maxima wavelengths:

493 nm / 522 nm

## Applications

Tested Applications:

FC (Intra)

Species Specificity:

human

Positive Controls:

FC (Intra) : λ phosphatase treated HeLa cells,

## Background Information

DNA-directed RNA polymerase II subunit RPB1 is the catalytic core component of DNA-dependent RNA polymerase II (Pol II). So that the information encoded in DNA can be used, RNA polymerase II makes copies of specific genes. To ensure that RNA polymerase II copies the correct genes at the correct time, a group of regulatory proteins are needed to control its activity. Many of these proteins interact with RNA polymerase II at a region known as the C-terminal domain, or CTD for short. For example, before RNA polymerase can make a full copy of a gene, a small molecule called a phosphate group must first be added to CTD at specific units known as Ser2. (PMID: 31385803)

## Storage

Storage:

Store at -20°C. Avoid exposure to light. Stable for one year after shipment.

Storage Buffer:

PBS with 50% glycerol, 0.05% Proclin300, 0.5% BSA, pH7.3

Aliquoting is unnecessary for -20°C storage

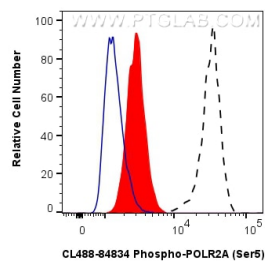
For technical support and original validation data for this product please contact:

T: 1 (888) 4PTGLAB (1-888-478-4522) (toll free in USA), or 1(312) 455-8498 (outside USA)

E: [proteintech@ptglab.com](mailto:proteintech@ptglab.com)  
W: [ptglab.com](http://ptglab.com)

This product is exclusively available under Proteintech Group brand and is not available to purchase from any other manufacturer.

## Selected Validation Data



1X10<sup>6</sup> HeLa cells untreated (dashed lines) or treated with  $\lambda$  phosphatase which intracellularly stained with 0.25  $\mu$ g Coralite® Plus 488 Phospho-POLR2A (Ser5) Recombinant Antibody (CL488-84834, Clone:241914E5)(red), or 0.25  $\mu$ g Coralite® Plus 488 Rabbit IgG Isotype Control RecAb (CL488-98136, Clone: 240953C9) (blue). Cells were fixed and permeabilized with Flow Cytometry Phosphorylated Protein Fixation/Permeabilization Kit (PF00026).