

For Research Use Only

CoraLite® Plus 488-conjugated ICAM-2/CD102 Recombinant monoclonal antibody

Catalog Number: **CL488-84857-2**



Basic Information

Catalog Number: CL488-84857-2	GenBank Accession Number: NM_001099789.2	Purification Method: Protein A purification
Size: 100ul , Concentration: 1000 ug/ml by Nanodrop;	GeneID (NCBI): 3384	CloneNo.: 242237F8
Source: Rabbit	UNIPROT ID: P13598	Recommended Dilutions: IF/ICC: 1:50-1:500
Isotype: IgG	Full Name: intercellular adhesion molecule 2	Excitation/Emission maxima wavelengths: 493 nm / 522 nm
Immunogen Catalog Number: EG2002	Calculated MW: 31kDa	

Applications

Tested Applications: IF/ICC	Positive Controls: IF/ICC : Jurkat cells,
Species Specificity: human	

Background Information

ICAM2 is a cell adhesion protein having important roles in cell migration, especially during inflammation when leukocytes cross the endothelium. Initially described as a receptor for lymphocyte function-associated antigen-1 (LFA1), ICAM2 may play a role in lymphocyte recirculation by blocking LFA-1-dependent cell adhesion. It mediates adhesive interactions important for antigen-specific immune response, NK-cell mediated clearance, lymphocyte recirculation, and other cellular interactions important for immune response and surveillance. ICAM2 has six N-linked glycosylation sites at amino acids (asparagines) 47, 82, 105, 153, 178 and 187.

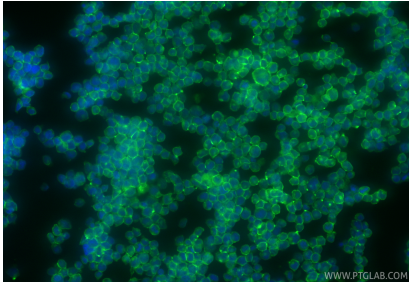
Storage

Storage:
Store at -20°C. Avoid exposure to light. Stable for one year after shipment.
Storage Buffer:
PBS with 50% glycerol, 0.05% Proclin300, 0.5% BSA, pH7.3
Aliquoting is unnecessary for -20°C storage

For technical support and original validation data for this product please contact:
T: 1 (888) 4PTGLAB (1-888-478-4522) (toll free in USA), or 1(312) 455-8498 (outside USA)
E: proteintech@ptglab.com
W: ptglab.com

This product is exclusively available under Proteintech Group brand and is not available to purchase from any other manufacturer.

Selected Validation Data



Immunofluorescent analysis of (4% PFA) fixed Jurkat cells using CoraLite® Plus 488 ICAM-2/CD102 antibody (CL488-84857-2, Clone: 242237F8) at dilution of 1:200.