

For Research Use Only

CoraLite® Plus 488-conjugated CENPF Recombinant antibody

Catalog Number: CL488-84865-4



Basic Information

Catalog Number: CL488-84865-4	GenBank Accession Number: NM_016343	Purification Method: Protein A purification
Size: 100ul , Concentration: 1000 ug/ml by Nanodrop;	GeneID (NCBI): 1063	CloneNo.: 242277G9
Source: Rabbit	UNIPROT ID: P49454	Recommended Dilutions: IF/ICC: 1:50-1:500
Isotype: IgG	Full Name: centromere protein F, 350/400ka (mitosin)	Excitation/Emission maxima wavelengths: 493 nm / 522 nm
Immunogen Catalog Number: AG29665	Calculated MW: 368 kDa	

Applications

Tested Applications: IF/ICC	Positive Controls: IF/ICC : HeLa cells,
Species Specificity: human	

Background Information

CENPF, also named as mitosin and centromere protein F (PMID: 22912832), belongs to centromere protein F family. During the cell cycle, CENPF localizes in multiple cellular structures including the nuclear envelope in late G2/early prophase and kinetochores throughout mitosis (PMID: 30198378). CENPF is required for kinetochore function and chromosome segregation in mitosis and required for kinetochore localization of dynein, LIS1, NDE1 and NDEL1 (PMID: 17600710)(PMID: 7542657). It regulates recycling of the plasma membrane by acting as a link between recycling vesicles and the microtubule network through its association with STX4 and SNAP25. Acts as a potential inhibitor of pocket protein-mediated cellular processes during development by regulating the activity of RB proteins during cell division and proliferation (PMID: 26125848). The calculated molecular weight of CENPF is ~358 kDa and CENPF can be detected as ~367 kDa (PMID: 7542657).

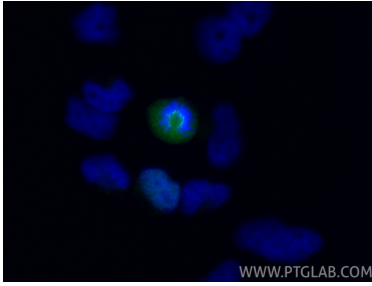
Storage

Storage:
Store at -20°C. Avoid exposure to light. Stable for one year after shipment.
Storage Buffer:
PBS with 50% glycerol, 0.05% Proclin300, 0.5% BSA, pH7.3
Aliquoting is unnecessary for -20°C storage

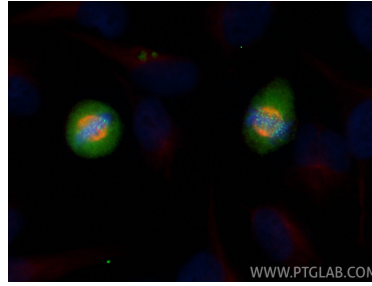
For technical support and original validation data for this product please contact:
T: 1 (888) 4PTGLAB (1-888-478-4522) (toll free in USA), or 1(312) 455-8498 (outside USA)
E: proteintech@ptglab.com
W: ptglab.com

This product is exclusively available under Proteintech Group brand and is not available to purchase from any other manufacturer.

Selected Validation Data



Immunofluorescent analysis of (4% PFA) fixed HeLa cells using CoraLite® Plus 488 CENPF antibody (CL488-84865-4, Clone: 242277G9) at dilution of 1:200.



Immunofluorescent analysis of (4% PFA) fixed HeLa cells using CoraLite® Plus 488 CENPF antibody (CL488-84865-4, Clone: 242277G9) at dilution of 1:200, CoraLite® 594 Alpha Tubulin antibody (CL594-66031, Clone: 1E4C11, red).