

For Research Use Only

CoraLite® Plus 488-conjugated RFC2 Recombinant antibody

Catalog Number: CL488-84892



Basic Information

Catalog Number: CL488-84892	GenBank Accession Number: BC002813	Purification Method: Protein A purification
Size: 100ul , Concentration: 1000 ug/ml by Nanodrop;	GeneID (NCBI): 5982	CloneNo.: 242503E12
Source: Rabbit	UNIPROT ID: P35250	Recommended Dilutions: IF/ICC: 1:50-1:500
Isotype: IgG	Full Name: replication factor C (activator 1) 2, 40kDa	Excitation/Emission maxima wavelengths: 493 nm / 522 nm
Immunogen Catalog Number: AG0663	Calculated MW: 39 kDa	

Applications

Tested Applications: IF/ICC	Positive Controls: IF/ICC : HeLa cells,
Species Specificity: human, mouse, rat	

Background Information

RFC2, also named RFC40, belongs to the activator 1 small subunits family. It is a 39 kDa Activator 1 subunit. It binds ATP. The elongation of primed DNA templates by DNA polymerase delta and epsilon requires the action of the accessory proteins proliferating cell nuclear antigen (PCNA) and activator 1. RFC2 is a constitutively expressed protein essential for both DNA repair and replication. (PMID: 20660762).

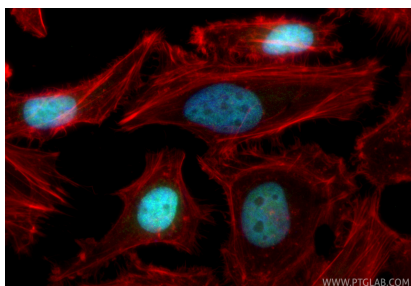
Storage

Storage:
Store at -20°C. Avoid exposure to light. Stable for one year after shipment.
Storage Buffer:
PBS with 50% glycerol, 0.05% Proclin300, 0.5% BSA, pH7.3
Aliquoting is unnecessary for -20°C storage

For technical support and original validation data for this product please contact:
T: 1 (888) 4PTGLAB (1-888-478-4522) (toll free in USA), or 1(312) 455-8498 (outside USA)
E: proteintech@ptglab.com
W: ptglab.com

This product is exclusively available under Proteintech Group brand and is not available to purchase from any other manufacturer.

Selected Validation Data



Immunofluorescent analysis of (4% PFA) fixed HeLa cells using CoraLite® Plus 488 RFC2 antibody (CL488-84892, Clone: 242503E12) at dilution of 1:200, CL594-Phalloidin (red).