

For Research Use Only

CoraLite® Plus 488-conjugated JUNB Recombinant antibody

Catalog Number: CL488-84922-6



Basic Information

Catalog Number:

CL488-84922-6

Size:

100ul , Concentration: 1000 ug/ml by Nanodrop;

Source:

Rabbit

Isotype:

IgG

Immunogen Catalog Number:

AG0752

GenBank Accession Number:

BC004250

GeneID (NCBI):

3726

UNIPROT ID:

P17275

Full Name:

jun B proto-oncogene

Calculated MW:

36 kDa

Observed MW:

42 kDa, 43 kDa

Purification Method:

Protein A purification

CloneNo.:

242562G2

Recommended Dilutions:

IF/ICC: 1:50-1:500

Excitation/Emission maxima wavelengths:

493 nm / 522 nm

Applications

Tested Applications:

IF/ICC

Species Specificity:

human

Positive Controls:

IF/ICC : HeLa cells, A431 cells

Background Information

JunB is one of the components of the Activator Protein-1 (AP-1) transcription complex that have been implicated in the control of the G0/G1 transition in fibroblasts. AP-1 is a collection of dimers formed by members of the Jun-, Fos-, ATF- and Maf multigene families that bind to specific DNA regulatory elements called AP-1/12-O-tetradecanoylphorbol-13-acetate-responsive elements (TREs) and cAMP-responsive elements (CREs). JunB binds to the DNA sequence 5'-TGA[CG]TCA-3', and involves in the regulation of gene activity following the primary growth factor response. It also acts either as a tumor suppressor or as an oncogene depending on the cell and physiopathological context

Storage

Storage:

Store at -20°C. Avoid exposure to light. Stable for one year after shipment.

Storage Buffer:

PBS with 50% glycerol, 0.05% Proclin300, 0.5% BSA, pH7.3

Aliquoting is unnecessary for -20°C storage

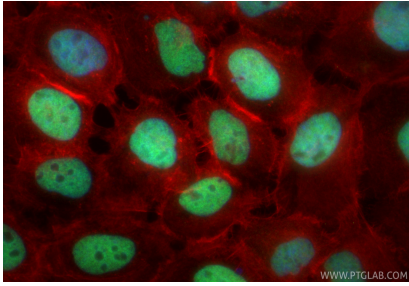
For technical support and original validation data for this product please contact:

T: 1 (888) 4PTGLAB (1-888-478-4522) (toll free in USA), or 1(312) 455-8498 (outside USA)

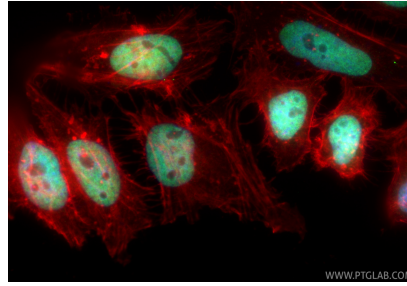
E: proteintech@ptglab.com
W: ptglab.com

This product is exclusively available under Proteintech Group brand and is not available to purchase from any other manufacturer.

Selected Validation Data



Immunofluorescent analysis of (4% PFA) fixed A431 cells using CoraLite® Plus 488 JUNB antibody (CL488-84922-6, Clone: 242562G2) at dilution of 1:200, CL594-Phalloidin (red).



Immunofluorescent analysis of (4% PFA) fixed HeLa cells using CoraLite® Plus 488 JUNB antibody (CL488-84922-6, Clone: 242562G2) at dilution of 1:200, CL594-Phalloidin (red).