

For Research Use Only

CoraLite® Plus 488-conjugated PSMD3 Recombinant monoclonal antibody

Catalog Number: CL488-84928-2



Basic Information

Catalog Number:

CL488-84928-2

Size:

100ul , Concentration: 1000 ug/ml by
Nanodrop;

Source:

Rabbit

Isotype:

IgG

Immunogen Catalog Number:

AG2684

GenBank Accession Number:

BC012302

GeneID (NCBI):

5709

UNIPROT ID:

O43242

Full Name:

proteasome (prosome, macropain)
26S subunit, non-ATPase, 3

Calculated MW:

534 aa, 61 kDa

Observed MW:

61 kDa

Purification Method:

Protein A purification

CloneNo.:

242470D4

Recommended Dilutions:

IF/ICC: 1:50-1:500

Excitation/Emission maxima wavelengths:

493 nm / 522 nm

Applications

Tested Applications:

IF/ICC

Species Specificity:

human, mouse, rat

Positive Controls:

IF/ICC : HeLa cells, A549 cells

Background Information

PSMD3, encoding proteasome (prosome, macropain) 26S subunit, non-ATPase 3, a member of the 26S proteasome family. PSMD3 is expressed in most of the tissues according to the RNA-Seq database. It has been reported that PSMD3 genotypes are associated with white blood cell (WBC) and neutrophil counts and have interactions with dietary fatty acids and carbohydrates on glucose-related traits. PSMD3 is located at ch17q21 and encodes a protein with a molecular weight of 61 kDa (PMID: 31013812).

Storage

Storage:

Store at -20°C. Avoid exposure to light. Stable for one year after shipment.

Storage Buffer:

PBS with 50% glycerol, 0.05% Proclin300, 0.5% BSA, pH7.3

Aliquoting is unnecessary for -20°C storage

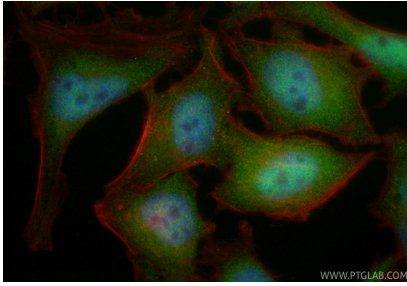
For technical support and original validation data for this product please contact:

T: 1 (888) 4PTGLAB (1-888-478-4522) (toll free
in USA), or 1(312) 455-8498 (outside USA)

E: proteintech@ptglab.com
W: ptglab.com

This product is exclusively available under Proteintech Group brand and is not available to purchase from any other manufacturer.

Selected Validation Data



Immunofluorescent analysis of (4% PFA) fixed HeLa cells using CoraLite® Plus 488 PSMD3 antibody (CL488-84928-2, Clone: 242470D4) at dilution of 1:200, CL594-Phalloidin (red).