

For Research Use Only

CoraLite® Plus 488-conjugated TEAD4 Recombinant antibody

Catalog Number: CL488-84932-4



Basic Information

Catalog Number: CL488-84932-4	GenBank Accession Number: BC015497	Purification Method: Protein A purification
Size: 100ul , Concentration: 1000 ug/ml by Nanodrop;	GeneID (NCBI): 7004	CloneNo.: 242496B2
Source: Rabbit	UNIPROT ID: Q15561	Recommended Dilutions: IF/ICC: 1:50-1:500
Isotype: IgG	Full Name: TEA domain family member 4	Excitation/Emission maxima wavelengths: 493 nm / 522 nm
Immunogen Catalog Number: AG3059	Calculated MW: 434 aa, 48 kDa	
	Observed MW: 50-55 kDa	

Applications

Tested Applications: IF/ICC	Positive Controls: IF/ICC : HeLa cells,
Species Specificity: human	

Background Information

TEAD4 belongs to a protein family that shares the TEA/ATTS domain. The transcriptional activity of TEAD4 required several regions of the proteins, a TBP-associated factor, and a limiting transcriptional intermediary factor. TEAD4 also performs an essential role in the Hippo signaling pathway. TEAD4 regulates gene expression of YAP1 and WWTR1/TAZ, thus mediating cell proliferation, migration, and epithelial-mesenchymal transition induction. The calculated molecular weight of TEAD4 is 48 kDa, but the molecular weight of TEAD4 is detected at about 50-55 kDa.

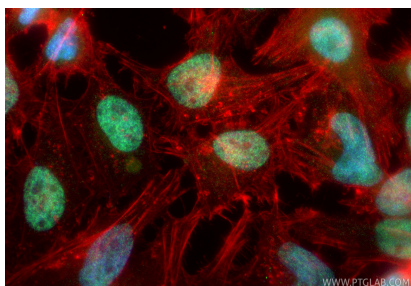
Storage

Storage:
Store at -20°C. Avoid exposure to light. Stable for one year after shipment.
Storage Buffer:
PBS with 50% glycerol, 0.05% Proclin300, 0.5% BSA, pH7.3
Aliquoting is unnecessary for -20°C storage

For technical support and original validation data for this product please contact:
T: 1 (888) 4PTGLAB (1-888-478-4522) (toll free in USA), or 1(312) 455-8498 (outside USA)
E: proteintech@ptglab.com
W: ptglab.com

This product is exclusively available under Proteintech Group brand and is not available to purchase from any other manufacturer.

Selected Validation Data



Immunofluorescent analysis of (4% PFA) fixed HeLa cells using CoraLite® Plus 488 TEAD4 antibody (CL488-84932-4, Clone: 242496B2) at dilution of 1:200, CL594-Phalloidin (red).