

For Research Use Only

CoraLite® Plus 488-conjugated RCN2 Recombinant monoclonal antibody

Catalog Number: CL488-84956-4



Basic Information

Catalog Number: CL488-84956-4	GenBank Accession Number: BC004892	Purification Method: Protein A purification
Size: 100ul , Concentration: 1000 ug/ml by Nanodrop;	GeneID (NCBI): 5955	CloneNo.: 242612A4
Source: Rabbit	UNIPROT ID: Q14257	Recommended Dilutions: IF/ICC: 1:50-1:500
Isotype: IgG	Full Name: reticulocalbin 2, EF-hand calcium binding domain	Excitation/Emission maxima wavelengths: 493 nm / 522 nm
Immunogen Catalog Number: AG0247	Calculated MW: 37 kDa	
	Observed MW: 55 kDa	

Applications

Tested Applications: IF/ICC	Positive Controls: IF/ICC : HeLa cells,
Species Specificity: human, mouse, rat	

Background Information

Reticulocalbin-2 (RCN2) is also named as endoplasmic reticulum Ca²⁺-binding protein of 55 kDa (ERC55) and E6-binding protein (E6BP). It is strictly located in endoplasmic reticulum (PMID: 34094681). RCN2 is a low-affinity Ca²⁺ binding protein localized to the secretory pathway of mammalian cells, belongs to a member of the EF-hand Ca²⁺ binding protein family, which participate in the secretory process, chaperone activity, signal transduction as well as participation in a large variety of disease processes (PMID: 19260022). As for cancer research, several studies showed that RCN2 was related to tumor progression, such as mammary cancer, cervical cancer, neck squamous cell carcinoma and colorectal cancer (PMID: 16351756, PMID: 32422974). RCN2 played a pivotal role in HCC pathogenesis through regulating activation of the epidermal growth factor receptor (EGFR) pathway and modulating epidermal growth factor receptor EGFR dimerization and internalization (PMID: 28745317).

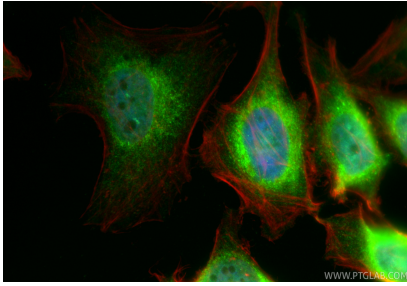
Storage

Storage:
Store at -20°C. Avoid exposure to light. Stable for one year after shipment.
Storage Buffer:
PBS with 50% glycerol, 0.05% Proclin300, 0.5% BSA, pH7.3
Aliquoting is unnecessary for -20°C storage

For technical support and original validation data for this product please contact:
T: 1 (888) 4PTGLAB (1-888-478-4522) (toll free in USA), or 1(312) 455-8498 (outside USA)
E: proteintech@ptglab.com
W: ptglab.com

This product is exclusively available under Proteintech Group brand and is not available to purchase from any other manufacturer.

Selected Validation Data



Immunofluorescent analysis of (4% PFA) fixed HeLa cells using CoraLite® Plus 488 RCN2 antibody (CL488-84956-4, Clone: 242612A4) at dilution of 1:200, CL594-phalloidin (red).