

For Research Use Only

CoraLite® Plus 488-conjugated Eg5 Recombinant antibody

Catalog Number:CL488-84966-2



Basic Information

Catalog Number: CL488-84966-2	GenBank Accession Number: BC136474	Purification Method: Protein A purification
Size: 100ul , Concentration: 1000 ug/ml by Nanodrop;	GeneID (NCBI): 3832	CloneNo.: 242611D10
Source: Rabbit	UNIPROT ID: P52732	Recommended Dilutions: IF/ICC: 1:50-1:500
Isotype: IgG	Full Name: kinesin family member 11	Excitation/Emission maxima wavelengths: 493 nm / 522 nm
Immunogen Catalog Number: AG20001	Calculated MW: 1056 aa, 119 kDa	
	Observed MW: 120-130 kDa	

Applications

Tested Applications: IF/ICC	Positive Controls: IF/ICC : HepG2 cells,
Species Specificity: human	

Background Information

Eg5 is a plus-end-directed microtubule motor encoded by KIF11 gene. It is an essential mitotic kinesin that plays a pivotal role in the formation and maintenance of bipolar spindle during early prometaphase. Eg5 has been implicated in tumorigenesis, and its overexpression has been found in various cancer tissues.

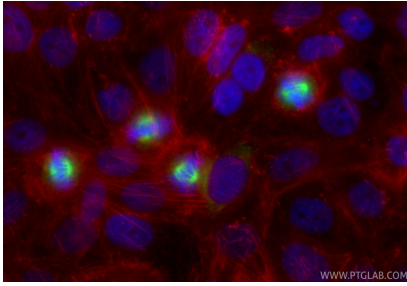
Storage

Storage:
Store at -20°C. Avoid exposure to light. Stable for one year after shipment.
Storage Buffer:
PBS with 50% glycerol, 0.05% Proclin300, 0.5% BSA, pH7.3
Aliquoting is unnecessary for -20°C storage

For technical support and original validation data for this product please contact:
T: 1 (888) 4PTGLAB (1-888-478-4522) (toll free in USA), or 1(312) 455-8498 (outside USA)
E: proteintech@ptglab.com
W: ptglab.com

This product is exclusively available under Proteintech Group brand and is not available to purchase from any other manufacturer.

Selected Validation Data



Immunofluorescent analysis of (4% PFA) fixed HepG2 cells using CoraLite® Plus 488 EGF5 antibody (CL488-84966-2, Clone: 242611D10) at dilution of 1:200, CL594-Phalloidin (red).