

For Research Use Only

CoraLite® Plus 488-conjugated RBM25 Recombinant monoclonal antibody

Catalog Number: CL488-84968-4



Basic Information

Catalog Number: CL488-84968-4	GenBank Accession Number: BC113389	Purification Method: Protein A purification
Size: 100ul , Concentration: 1000 ug/ml by Nanodrop;	GeneID (NCBI): 58517	CloneNo.: 242526B7
Source: Rabbit	UNIPROT ID: P49756	Recommended Dilutions: IF/ICC: 1:50-1:500
Isotype: IgG	Full Name: RNA binding motif protein 25	Excitation/Emission maxima wavelengths: 493 nm / 522 nm
Immunogen Catalog Number: AG18244	Calculated MW: 843 aa, 100 kDa	
	Observed MW: 110-120 kDa	

Applications

Tested Applications: IF/ICC	Positive Controls: IF/ICC : HeLa cells,
Species Specificity: human, mouse	

Background Information

RNA-binding protein 25 (RBM25), also named as Protein S164 or RNPC7, is a 843 amino acid protein, which contains one RRM domain and one PWI domain. RBM25 localizes in the nucleus and cytoplasm. RBM25 acts as a regulator of alternative pre-mRNA splicing and is involved in apoptotic cell death through the regulation of the apoptotic factor BCL2L1 isoform expression.

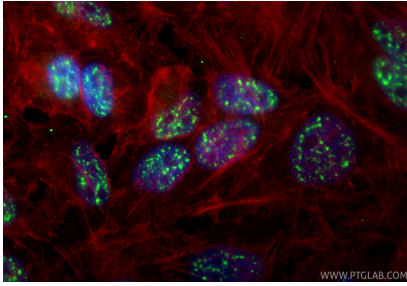
Storage

Storage:
Store at -20°C. Avoid exposure to light. Stable for one year after shipment.
Storage Buffer:
PBS with 50% glycerol, 0.05% Proclin300, 0.5% BSA, pH7.3
Aliquoting is unnecessary for -20°C storage

For technical support and original validation data for this product please contact:
T: 1 (888) 4PTGLAB (1-888-478-4522) (toll free in USA), or 1(312) 455-8498 (outside USA)
E: proteintech@ptglab.com
W: ptglab.com

This product is exclusively available under Proteintech Group brand and is not available to purchase from any other manufacturer.

Selected Validation Data



Immunofluorescent analysis of (4% PFA) fixed HeLa cells using CoraLite® Plus 488 RBM25 antibody (CL488-84968-4, Clone: 242526B7) at dilution of 1:200, CL594-Phalloidin (red).