

For Research Use Only

CoraLite® Plus 488-conjugated GS28 Recombinant antibody

Catalog Number: CL488-84971-3



Basic Information

Catalog Number: CL488-84971-3	GenBank Accession Number: BC012620	Purification Method: Protein A purification
Size: 100ul , Concentration: 1000 ug/ml by Nanodrop;	GeneID (NCBI): 9527	CloneNo.: 242552G12
Source: Rabbit	UNIPROT ID: O95249	Recommended Dilutions: IF/ICC: 1:50-1:500
Isotype: IgG	Full Name: golgi SNAP receptor complex member 1	Excitation/Emission maxima wavelengths: 493 nm / 522 nm
Immunogen Catalog Number: AG9021	Calculated MW: 28.6 kDa	
	Observed MW: 28 kDa	

Applications

Tested Applications: IF/ICC	Positive Controls: IF/ICC : HeLa cells,
Species Specificity: human, mouse, rat	

Background Information

GS28, also known as GOSR1, is a 28-kDa Golgi SNARE protein that participates in ER-Golgi and intra-Golgi transport. GS28 is considered to be a core component of the Golgi SNARE complex. (PMID: 8638159)

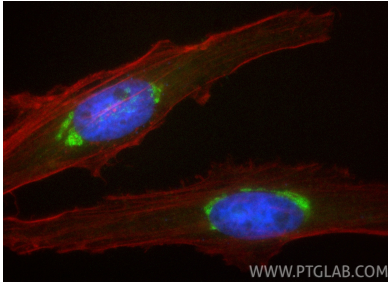
Storage

Storage:
Store at -20°C. Avoid exposure to light. Stable for one year after shipment.
Storage Buffer:
PBS with 50% glycerol, 0.05% Proclin300, 0.5% BSA, pH7.3
Aliquoting is unnecessary for -20°C storage

For technical support and original validation data for this product please contact:
T: 1 (888) 4PTGLAB (1-888-478-4522) (toll free in USA), or 1(312) 455-8498 (outside USA)
E: proteintech@ptglab.com
W: ptglab.com

This product is exclusively available under Proteintech Group brand and is not available to purchase from any other manufacturer.

Selected Validation Data



Immunofluorescent analysis of (4% PFA) fixed HeLa cells using CoraLite® Plus 488 G528 antibody (CL488-84971-3, Clone: 242552G12) at dilution of 1:200, CL594-Phalloidin (red).