

For Research Use Only

CoraLite® Plus 488-conjugated TBX4/5 Recombinant monoclonal antibody

Catalog Number: CL488-84997-4



Basic Information

Catalog Number: CL488-84997-4	GenBank Accession Number: BC027942	Purification Method: Protein A purification
Size: 100ul , Concentration: 1000 ug/ml by Nanodrop;	GeneID (NCBI): 6910	CloneNo.: 242565F1
Source: Rabbit	UNIPROT ID: Q99593	Recommended Dilutions: IF/ICC: 1:50-1:500
Isotype: IgG	Full Name: T-box 5	Excitation/Emission maxima wavelengths: 493 nm / 522 nm
Immunogen Catalog Number: AG3845	Calculated MW: 518 aa, 57 kDa	

Applications

Tested Applications: IF/ICC	Positive Controls: IF/ICC : HepG2 cells,
Species Specificity: human	

Background Information

T-box genes encode a family of transcription factors that have been identified in all metazoans and which play diverse roles during embryonic development. TBX5, a member of T-box family, has an essential role in the initiation of limb outgrowth and heart development. Genetic variation near TBX5 that associates with PR and/or QRS interval variation, which suggests that TBX5 plays a role in CCS function in the general population. Because 77 % amino acid sequence of TBX5 is identical to TBX4, this antibody recognizes both TBX4 and TBX5.

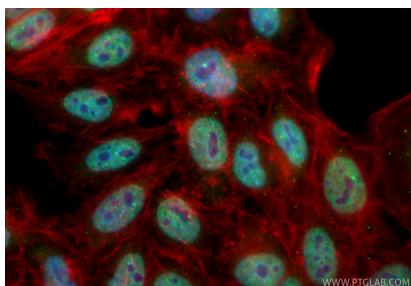
Storage

Storage:
Store at -20°C. Avoid exposure to light. Stable for one year after shipment.
Storage Buffer:
PBS with 50% glycerol, 0.05% Proclin300, 0.5% BSA, pH7.3
Aliquoting is unnecessary for -20° C storage

For technical support and original validation data for this product please contact:
T: 1 (888) 4PTGLAB (1-888-478-4522) (toll free in USA), or 1(312) 455-8498 (outside USA)
E: proteintech@ptglab.com
W: ptglab.com

This product is exclusively available under Proteintech Group brand and is not available to purchase from any other manufacturer.

Selected Validation Data



Immunofluorescent analysis of (4% PFA) fixed HepG2 cells using CoraLite® Plus 488 TBX4/5 antibody (CL488-84997-4, Clone: 242565F1) at dilution of 1:200, CL594-Phalloidin (red).