

For Research Use Only

CoraLite® Plus 488-conjugated CD29 Recombinant antibody

Catalog Number: CL488-85005



Basic Information

Catalog Number: CL488-85005	GenBank Accession Number: BC020057	Purification Method: Protein A purification
Size: 100ul , Concentration: 1000 ug/ml by Nanodrop;	GeneID (NCBI): 3688	CloneNo.: 241684B11
Source: Rabbit	ENSEMBL Gene ID: ENSG00000150093	Recommended Dilutions: IF/ICC: 1:50-1:500
Isotype: IgG	UNIPROT ID: P05556	Excitation/Emission maxima wavelengths: 493 nm / 522 nm
Immunogen Catalog Number: EG2093	Full Name: integrin, beta 1 (fibronectin receptor, beta polypeptide, antigen CD29 includes MDF2, MSK12)	
	Calculated MW: 88 kDa	

Applications

Tested Applications: IF/ICC	Positive Controls: IF/ICC : HeLa cells,
Species Specificity: human	

Background Information

Integrin beta-1 (ITGB1), also named as CD29, is a single chain type I glycoprotein that is expressed in a heterodimeric complex with one of six distinct α subunits, comprising the very late activation antigen (VLA) subfamily of adhesion receptors. It is one of the essential surface molecules expressed on human MSC from bone marrow and other sources. The β 1 subunit is also broadly expressed on lymphocytes and monocytes, weakly expressed on granulocytes, and not expressed on erythrocytes. These receptors are involved in a variety of cell-cell and cell-matrix interactions.

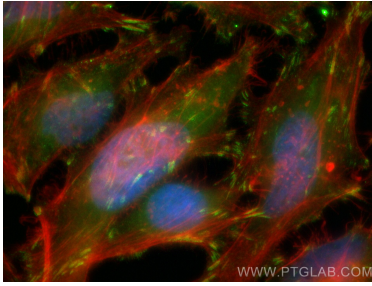
Storage

Storage:
Store at -20°C. Avoid exposure to light. Stable for one year after shipment.
Storage Buffer:
PBS with 50% glycerol, 0.05% Proclin300, 0.5% BSA, pH7.3
Aliquoting is unnecessary for -20°C storage

For technical support and original validation data for this product please contact:
T: 1 (888) 4PTGLAB (1-888-478-4522) (toll free in USA), or 1(312) 455-8498 (outside USA)
E: proteintech@ptglab.com
W: ptglab.com

This product is exclusively available under Proteintech Group brand and is not available to purchase from any other manufacturer.

Selected Validation Data



Immunofluorescent analysis of (4% PFA) fixed HeLa cells using Coralite® Plus 488 CD29 antibody (CL488-85005, Clone: 241684B11) at dilution of 1:200, CL594-Phalloidin (red).