

For Research Use Only

CoraLite® Plus 488-conjugated KIF17 Recombinant monoclonal antibody

Catalog Number:CL488-85046



Basic Information

Catalog Number: CL488-85046	GenBank Accession Number: BC065927	Purification Method: Protein A purification
Size: 100ul , Concentration: 1000 ug/ml by Nanodrop;	GeneID (NCBI): 57576	CloneNo.: 242469G4
Source: Rabbit	UNIPROT ID: Q9P2E2	Recommended Dilutions: IF/ICC: 1:50-1:500
Isotype: IgG	Full Name: kinesin family member 17	Excitation/Emission maxima wavelengths: 493 nm / 522 nm
Immunogen Catalog Number: AG6217	Calculated MW: 115 kDa	
	Observed MW: 170 kDa	

Applications

Tested Applications: IF/ICC	Positive Controls: IF/ICC : HepG2 cells, HeLa cells
Species Specificity: human, mouse, rat	

Background Information

KIF17 is a kinesin superfamily member, encoding a neuron-specific molecular motor. In neurons, KIF17 is responsible for the specialized transport of the N-methyl-D-aspartate receptor NR2B subunit, the glutamate receptor GluR5, and the potassium channel Kv4.2 from the cell body to the dendrites(PMID: 23762210).

Storage

Storage:
Store at -20°C. Avoid exposure to light. Stable for one year after shipment.
Storage Buffer:
PBS with 50% glycerol, 0.05% Proclin300, 0.5% BSA, pH7.3
Aliquoting is unnecessary for -20°C storage

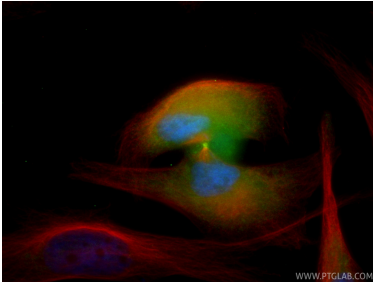
For technical support and original validation data for this product please contact:

T: 1 (888) 4PTGLAB (1-888-478-4522) (toll free
in USA), or 1(312) 455-8498 (outside USA)

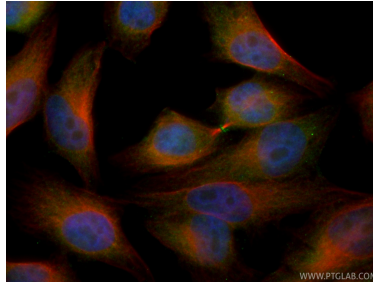
E: proteintech@ptglab.com
W: ptglab.com

This product is exclusively available under Proteintech Group brand and is not available to purchase from any other manufacturer.

Selected Validation Data



Immunofluorescent analysis of (4% PFA) fixed HeLa cells using CoraLite® Plus 488 KIF17 antibody (CL488-85046, Clone: 242469G4) at dilution of 1:200, Alpha Tubulin antibody (66031-1-Ig, Clone: 1E4C11, red).



Immunofluorescent analysis of (4% PFA) fixed HepG2 cells using CoraLite® Plus 488 KIF17 antibody (CL488-85046, Clone: 242469G4) at dilution of 1:200, Alpha Tubulin antibody (66031-1-Ig, Clone: 1E4C11, red).