

For Research Use Only

CoraLite® Plus 488-conjugated RGS12 Recombinant monoclonal antibody

Catalog Number: CL488-85057-2



Basic Information

Catalog Number:

CL488-85057-2

Size:

100ul , Concentration: 1000 ug/ml by 6002

Nanodrop;

Source:

Rabbit

Isotype:

IgG

Immunogen Catalog Number:

AG30731

GenBank Accession Number:

NM_198229

GeneID (NCBI):

6002

UNIPROT ID:

O14924

Full Name:

regulator of G-protein signaling 12

Calculated MW:

156 kDa

Observed MW:

140-150 kDa

Purification Method:

Protein A purification

CloneNo.:

242530G11

Recommended Dilutions:

IF/ICC: 1:50-1:500

Excitation/Emission maxima

wavelengths:

493 nm / 522 nm

Applications

Tested Applications:

IF/ICC

Species Specificity:

human, mouse, rat

Positive Controls:

IF/ICC : PC-3 cells,

Storage

Storage:

Store at -20°C. Avoid exposure to light. Stable for one year after shipment.

Storage Buffer:

PBS with 50% glycerol, 0.05% Proclin300, 0.5% BSA, pH7.3

Aliquoting is unnecessary for -20°C storage

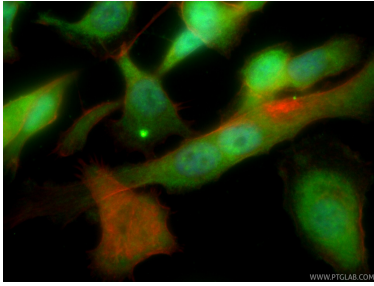
For technical support and original validation data for this product please contact:

T: 1 (888) 4PTGLAB (1-888-478-4522) (toll free
in USA), or 1(312) 455-8498 (outside USA)

E: proteintech@ptglab.com
W: ptglab.com

This product is exclusively available under Proteintech
Group brand and is not available to purchase from any
other manufacturer.

Selected Validation Data



Immunofluorescent analysis of (-20°C Ethanol) fixed PC-3 cells using Coralite® Plus 488 RGS12 antibody (CL488-85057-2, Clone: 242530G11) at dilution of 1:200, CL594-phalloidin (red).