

For Research Use Only

CoraLite® Plus 488-conjugated MRPL12 Recombinant antibody

Catalog Number: CL488-85070-5



Basic Information

Catalog Number: CL488-85070-5	GenBank Accession Number: BC002344	Purification Method: Protein A purification
Size: 100ul , Concentration: 1000 ug/ml by Nanodrop;	GeneID (NCBI): 6182	CloneNo.: 242622D12
Source: Rabbit	UNIPROT ID: P52815	Recommended Dilutions: IF/ICC: 1:50-1:500
Isotype: IgG	Full Name: mitochondrial ribosomal protein L12	Excitation/Emission maxima wavelengths: 493 nm / 522 nm
Immunogen Catalog Number: AG6504	Calculated MW: 21 kDa	
	Observed MW: 21 kDa	

Applications

Tested Applications: IF/ICC	Positive Controls: IF/ICC : HepG2 cells,
Species Specificity: human, rat	

Background Information

Mammalian MRPL12 was the first mitochondrial ribosomal protein to be characterized, and is encoded by a nuclear gene. The protein forms a homodimer, localizes predominantly to mitochondria and binds to the large mitochondrial ribosomal subunit [PMID:862670]. It is required for CycD/Cdk4-induced cell growth. In addition, forming a ribosomal stalk with MRPL7, MRPL12 is required for the recruitment of translation elongation factors Tu and G to the large ribosomal subunit [PMID:12370014]. It also a part of a novel regulatory mechanism that coordinates mitochondrial transcription with translation and/or ribosome biogenesis during human mitochondrial gene expression.

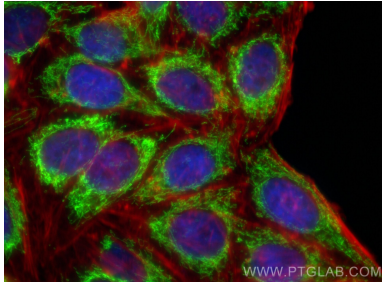
Storage

Storage:
Store at -20°C. Avoid exposure to light. Stable for one year after shipment.
Storage Buffer:
PBS with 50% glycerol, 0.05% Proclin300, 0.5% BSA, pH7.3
Aliquoting is unnecessary for -20°C storage

For technical support and original validation data for this product please contact:
T: 1 (888) 4PTGLAB (1-888-478-4522) (toll free in USA), or 1(312) 455-8498 (outside USA)
E: proteintech@ptglab.com
W: ptglab.com

This product is exclusively available under Proteintech Group brand and is not available to purchase from any other manufacturer.

Selected Validation Data



Immunofluorescent analysis of (4% PFA) fixed HepG2 cells using CoraLite® Plus 488 MRPL12 antibody (CL488-85070-5, Clone: 242622D12) at dilution of 1:200, CL594-Phalloidin (red).