

For Research Use Only

# CoraLite® Plus 488-conjugated NME2 Recombinant monoclonal antibody

Catalog Number: CL488-85074-4



## Basic Information

### Catalog Number:

CL488-85074-4

### Size:

100ul , Concentration: 1000 ug/ml by  
Nanodrop;

### Source:

Rabbit

### Isotype:

IgG

### Immunogen Catalog Number:

AG13913

### GenBank Accession Number:

BC002476

### GeneID (NCBI):

4831

### UNIPROT ID:

P22392

### Full Name:

non-metastatic cells 2, protein  
(NM23B) expressed in

### Calculated MW:

152 aa, 17 kDa

### Observed MW:

17 kDa

### Purification Method:

Protein A purification

### CloneNo.:

242698C3

### Recommended Dilutions:

IF/ICC: 1:50-1:500

### Excitation/Emission maxima wavelengths:

493 nm / 522 nm

## Applications

### Tested Applications:

IF/ICC

### Species Specificity:

human, mouse, rat

### Positive Controls:

IF/ICC : Jurkat cells,

## Background Information

NME2(non-metastatic cells 2, protein) is also named as NDKB(Nucleoside diphosphate kinase B), NM23B and belongs to the NDK family. It is involved in the phosphorylation of nucleoside diphosphates and interacts with membrane receptor and constituting a novel molecular regulatory mechanism of GPCR endocytosis. This protein has 2 isoforms produced by alternative splicing.

## Storage

### Storage:

Store at -20°C. Avoid exposure to light. Stable for one year after shipment.

### Storage Buffer:

PBS with 50% glycerol, 0.05% Proclin300, 0.5% BSA, pH7.3

Aliquoting is unnecessary for -20°C storage

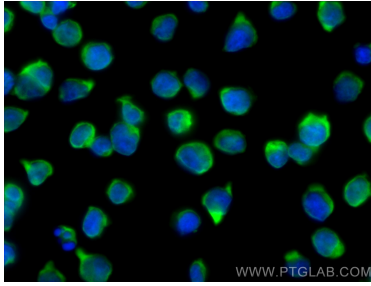
For technical support and original validation data for this product please contact:

T: 1 (888) 4PTGLAB (1-888-478-4522) (toll free  
in USA), or 1(312) 455-8498 (outside USA)

E: [proteintech@ptglab.com](mailto:proteintech@ptglab.com)  
W: [ptglab.com](http://ptglab.com)

This product is exclusively available under Proteintech Group brand and is not available to purchase from any other manufacturer.

## Selected Validation Data



Immunofluorescent analysis of (4% PFA) fixed Jurkat cells using CoraLite® Plus 488 NME2 antibody (CL488-85074-4, Clone: 242698C3 ) at dilution of 1:200.