

For Research Use Only

CoraLite® Plus 488-conjugated SYTL5 Recombinant antibody

Catalog Number:CL488-85108-5



Basic Information

Catalog Number:

CL488-85108-5

Size:

100ul , Concentration: 1000 ug/ml by
Nanodrop;

Source:

Rabbit

Isotype:

IgG

Immunogen Catalog Number:

AG21698

GenBank Accession Number:

BC131585

GeneID (NCBI):

94122

UNIPROT ID:

Q8TDW5

Full Name:

synaptotagmin-like 5

Calculated MW:

730 aa, 81 kDa

Observed MW:

82 kDa

Purification Method:

Protein A purification

CloneNo.:

242838D12

Recommended Dilutions:

IF-P: 1:50-1:500

Excitation/Emission maxima wavelengths:

493 nm / 522 nm

Applications

Tested Applications:

IF-P

Species Specificity:

human, rat

Positive Controls:

IF-P : rat brain tissue,

Background Information

SYTL5, also known as SLP5, is a member of the synaptotagmin-like protein (Slp) family. Members of this family are characterized by the presence of an N-terminal Slp homology domain (SHD), which functions as a Rab27-binding domain, and C-terminal tandem C2 domains, putative Ca(2+)-binding motifs. SYTL5 promotes the development and progression of papillary thyroid carcinoma (PTC) by activating the NF-κB signaling pathway (PMID: 36378561).

Storage

Storage:

Store at -20°C. Avoid exposure to light. Stable for one year after shipment.

Storage Buffer:

PBS with 50% glycerol, 0.05% Proclin300, 0.5% BSA, pH7.3

Aliquoting is unnecessary for -20°C storage

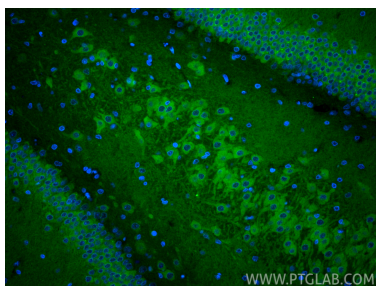
For technical support and original validation data for this product please contact:

T: 1 (888) 4PTGLAB (1-888-478-4522) (toll free
in USA), or 1(312) 455-8498 (outside USA)

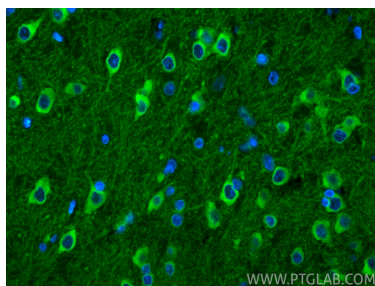
E: proteintech@ptglab.com
W: ptglab.com

This product is exclusively available under Proteintech Group brand and is not available to purchase from any other manufacturer.

Selected Validation Data



Immunofluorescent analysis of (4% PFA) fixed paraffin-embedded rat brain tissue using CoraLite® Plus 488 SYTL5 antibody (CL488-85108-5, Clone: 242838D12) at dilution of 1:200. Heat mediated antigen retrieval with Tris-EDTA buffer (pH 9.0).



Immunofluorescent analysis of (4% PFA) fixed paraffin-embedded rat brain tissue using CoraLite® Plus 488 SYTL5 antibody (CL488-85108-5, Clone: 242838D12) at dilution of 1:200. Heat mediated antigen retrieval with Tris-EDTA buffer (pH 9.0).