

For Research Use Only

CoraLite® Plus 488-conjugated HCLS1 Recombinant antibody

Catalog Number: CL488-85114



Basic Information

Catalog Number:

CL488-85114

Size:

100ul , Concentration: 1000 ug/ml by Nanodrop;

Source:

Rabbit

Isotype:

IgG

Immunogen Catalog Number:

AG8645

GenBank Accession Number:

BC016758

GeneID (NCBI):

3059

UNIPROT ID:

P14317

Full Name:

hematopoietic cell-specific Lyn substrate 1

Calculated MW:

486 aa, 54 kDa

Observed MW:

75 kDa

Purification Method:

Protein A purification

CloneNo.:

242825E4

Recommended Dilutions:

IF/ICC: 1:50-1:500

Excitation/Emission maxima wavelengths:

493 nm / 522 nm

Applications

Tested Applications:

IF/ICC

Species Specificity:

human, mouse, rat

Positive Controls:

IF/ICC : Jurkat cells,

Background Information

Hematopoietic cell-specific Lyn substrate 1 (HS1, HCLS1, LckBP1 and p75) is a 75-kDa intracellular protein expressed in cells of lymphohemopoietic origin. It was originally identified in B-lymphocytes as a major substrate of B-cell receptor (BCR)-induced phosphorylation after antigen (Ag) stimulation. It's a substrate of the antigen receptor-coupled tyrosine kinase. HCLS1 plays a role in antigen receptor signaling for both clonal expansion and deletion in lymphoid cells.

Storage

Storage:

Store at -20°C. Avoid exposure to light. Stable for one year after shipment.

Storage Buffer:

PBS with 50% glycerol, 0.05% Proclin300, 0.5% BSA, pH7.3

Aliquoting is unnecessary for -20°C storage

For technical support and original validation data for this product please contact:

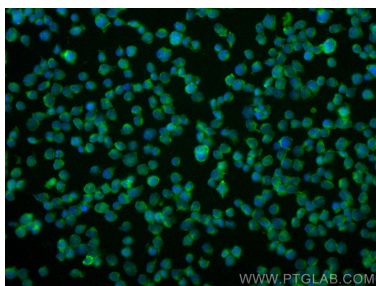
T: 1 (888) 4PTGLAB (1-888-478-4522) (toll free in USA), or 1(312) 455-8498 (outside USA)

E: proteintech@ptglab.com

W: ptglab.com

This product is exclusively available under Proteintech Group brand and is not available to purchase from any other manufacturer.

Selected Validation Data



Immunofluorescent analysis of (4% PFA) fixed Jurkat cells using CoraLite® Plus 488 HCLS1 antibody (CL488-85114, Clone: 242825E4) at dilution of 1:200.