

For Research Use Only

CoraLite® Plus 488-conjugated TPX2 Recombinant antibody

Catalog Number: CL488-85118-6



Basic Information

Catalog Number: CL488-85118-6	GenBank Accession Number: BC020207	Purification Method: Protein A purification
Size: 100ul , Concentration: 1000 ug/ml by Nanodrop;	GeneID (NCBI): 22974	CloneNo.: 242528G6
Source: Rabbit	UNIPROT ID: Q9ULW0	Recommended Dilutions: IF/ICC: 1:50-1:500
Isotype: IgG	Full Name: TPX2, microtubule-associated, homolog (Xenopus laevis)	Excitation/Emission maxima wavelengths: 493 nm / 522 nm
Immunogen Catalog Number: AG2334	Calculated MW: 747 aa, 86 kDa	
	Observed MW: 100 kDa	

Applications

Tested Applications: IF/ICC	Positive Controls: IF/ICC : HepG2 cells,
Species Specificity: human, mouse	

Background Information

TPX2, also known as DIL2, p10, is a microtubule organization- and cell cycle-associated protein. In the early stage of mitosis, TPX2 is released in a RanGTP-dependent manner and plays a significant role in mitotic spindle formation and subsequent proper segregation of chromosomes during cell division. Furthermore, during interphase, TPX2 is involved in DNA damage response by regulation of γ -H2AX signals(PMID: 25914189). Aberrant expression of TPX2 leads to improper spindle assembly and chromosomal instability. Overexpressed in cancers, TPX2 is being established as the marker for the diagnosis and prognosis of malignancies(PMID: 24556998).

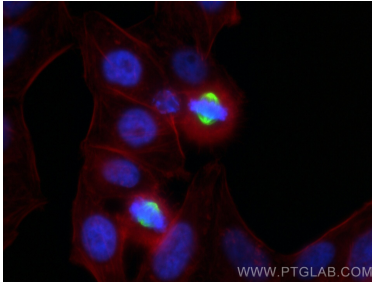
Storage

Storage:
Store at -20°C. Avoid exposure to light. Stable for one year after shipment.
Storage Buffer:
PBS with 50% glycerol, 0.05% Proclin300, 0.5% BSA, pH7.3
Aliquoting is unnecessary for -20°C storage

For technical support and original validation data for this product please contact:
T: 1 (888) 4PTGLAB (1-888-478-4522) (toll free in USA), or 1(312) 455-8498 (outside USA)
E: proteintech@ptglab.com
W: ptglab.com

This product is exclusively available under Proteintech Group brand and is not available to purchase from any other manufacturer.

Selected Validation Data



Immunofluorescent analysis of (4% PFA) fixed HepG2 cells using CoraLite® Plus 488 TPX2 antibody (CL488-85118-6, Clone: 242528G6) at dilution of 1:200, CL594-Phalloidin (red).