

For Research Use Only



CoraLite® Plus 488-conjugated SYN1-Specific Recombinant monoclonal antibody

Catalog Number: **CL488-85360**

Basic Information

Catalog Number: CL488-85360	GenBank Accession Number: NM_006950	Purification Method: Protein A purification
Size: 100ul , Concentration: 1000 ug/ml by Nanodrop;	GeneID (NCBI): 6853	CloneNo.: 242415H5
Source: Rabbit	UNIPROT ID: P17600	Recommended Dilutions: IF-P: 1:50-1:500
Isotype: IgG	Full Name: synapsin I	Excitation/Emission maxima wavelengths: 493 nm / 522 nm
	Calculated MW: 74 kDa	
	Observed MW: 70-80 kDa	

Applications

Tested Applications: IF-P	Positive Controls: IF-P : rat brain tissue,
Species Specificity: human, mouse	

Background Information

SYN1, also named Brain protein 4.1, belongs to the synapsin family. SYN1 is a neuronal phosphoprotein that coats synaptic vesicles, binds to the cytoskeleton, and is believed to function in the regulation of neurotransmitter release. The complex formed with NOS1 and CAPON proteins is necessary for specific nitric-oxid functions at a presynaptic level. Defects in SYN1 are a cause of epilepsy X-linked with variable learning disabilities and behavior disorders (XELBD).

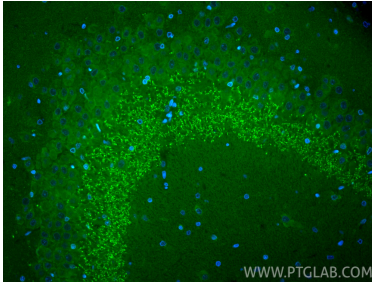
Storage

Storage:
Store at -20°C. Avoid exposure to light. Stable for one year after shipment.
Storage Buffer:
PBS with 50% glycerol, 0.05% Proclin300, 0.5% BSA, pH7.3
Aliquoting is unnecessary for -20°C storage

For technical support and original validation data for this product please contact:
T: 1 (888) 4PTGLAB (1-888-478-4522) (toll free in USA), or 1(312) 455-8498 (outside USA)
E: proteintech@ptglab.com
W: ptglab.com

This product is exclusively available under Proteintech Group brand and is not available to purchase from any other manufacturer.

Selected Validation Data



Immunofluorescent analysis of (4% PFA) fixed paraffin-embedded rat brain tissue using CoraLite® Plus 488 SYN1-Specific antibody (CL488-85360, Clone: 242415H5) at dilution of 1:200. Heat mediated antigen retrieval with Tris-EDTA buffer (pH 9.0).