

For Research Use Only



# CoraLite® Plus 488-conjugated SLC25A6-Specific Recombinant monoclonal antibody

Catalog Number: **CL488-85368**

## Basic Information

<b>Catalog Number:</b> CL488-85368	<b>GenBank Accession Number:</b> NM_001636	<b>Purification Method:</b> Protein A purification
<b>Size:</b> 100ul , Concentration: 1000 ug/ml by Nanodrop;	<b>GeneID (NCBI):</b> 293	<b>CloneNo.:</b> 242652A8
<b>Source:</b> Rabbit	<b>UNIPROT ID:</b> P12236	<b>Recommended Dilutions:</b> IF/ICC: 1:50-1:500
<b>Isotype:</b> IgG	<b>Full Name:</b> solute carrier family 25 (mitochondrial carrier; adenine nucleotide translocator), member 6	<b>Excitation/Emission maxima wavelengths:</b> 493 nm / 522 nm
	<b>Calculated MW:</b> 33 kDa	
	<b>Observed MW:</b> 30-33 kDa	

## Applications

<b>Tested Applications:</b> IF/ICC	<b>Positive Controls:</b> IF/ICC : A549 cells, HepG2 cells
<b>Species Specificity:</b> human, mouse, rat	

## Background Information

SLC25A6, also known as ANT3 (adenine nucleotide translocase 3), is a member of the solute carrier family 25, specifically the mitochondrial carrier subfamily. As part of the mitochondrial carrier family, SLC25A6 plays a role in the mitochondrial energy production process by facilitating the exchange of metabolites necessary for oxidative phosphorylation (PMID: 23506884).

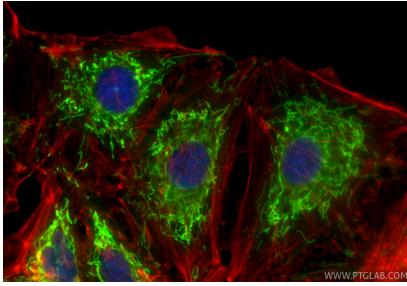
## Storage

**Storage:**  
Store at -20°C. Avoid exposure to light. Stable for one year after shipment.  
**Storage Buffer:**  
PBS with 50% glycerol, 0.05% Proclin300, 0.5% BSA, pH7.3  
Aliquoting is unnecessary for -20°C storage

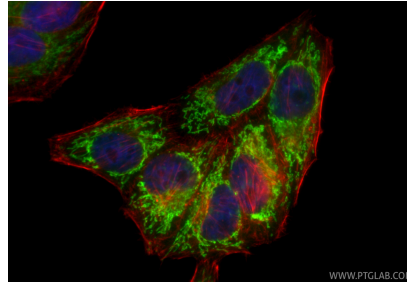
For technical support and original validation data for this product please contact:  
T: 1 (888) 4PTGLAB (1-888-478-4522) (toll free in USA), or 1(312) 455-8498 (outside USA)  
E: [proteintech@ptglab.com](mailto:proteintech@ptglab.com)  
W: [ptglab.com](http://ptglab.com)

This product is exclusively available under Proteintech Group brand and is not available to purchase from any other manufacturer.

## Selected Validation Data



Immunofluorescent analysis of (4% PFA) fixed A549 cells using CoraLite® Plus 488 SLC25A6-Specific antibody (CL488-85368, Clone: 242652A8) at dilution of 1:200, CL594-phalloidin (red).



Immunofluorescent analysis of (4% PFA) fixed HepG2 cells using CoraLite® Plus 488 SLC25A6-Specific antibody (CL488-85368, Clone: 242652A8) at dilution of 1:200, CL594-phalloidin (red).