

For Research Use Only

CoraLite® Plus 488-conjugated PSIP1 Recombinant antibody

Catalog Number:CL488-85395



Basic Information

Catalog Number:	GenBank Accession Number:	Purification Method:
CL488-85395	BC064135	Protein A purification
Size:	GeneID (NCBI):	CloneNo.:
100ul , Concentration: 1000 ug/ml by Nanodrop;	11168	242841C5
Source:	UNIPROT ID:	Recommended Dilutions:
Rabbit	O75475	IF/ICC 1:50-1:500
Isotype:	Full Name:	Excitation/Emission maxima wavelengths:
IgG	PC4 and SFRS1 interacting protein 1	493 nm / 522 nm
Immunogen Catalog Number:	Calculated MW:	
AG21886	530 aa, 60 kDa	
	Observed MW:	
	75 kDa	

Applications

Tested Applications:	Positive Controls:
IF/ICC	IF/ICC : HepG2 cells,
Species Specificity:	
human, mouse, rat	

Background Information

PSIP1, also known as PC4 and SRSF1 Interacting Protein 1 or Lens Epithelium-Derived Growth Factor (LEDGF), is a transcriptional coactivator involved in neuroepithelial stem cell differentiation and neurogenesis. It also plays a role in lens epithelial cell gene regulation and stress responses. It is a chromatin-associated protein with histone chaperone activity, involved in transcriptional elongation. PSIP1 may act as an adapter to coordinate pre-mRNA splicing. PSIP1 encodes two protein isoforms with molecular masses of 52 and 75 kDa. p52 and p75 were identified as interacting with transcription factor PC4 and shown to act as transcriptional coactivators.

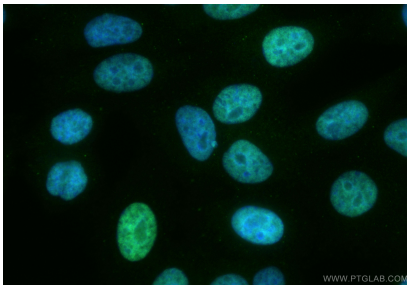
Storage

Storage:
Store at -20°C. Avoid exposure to light. Stable for one year after shipment.
Storage Buffer:
PBS with 50% glycerol, 0.05% Proclin300, 0.5% BSA, pH7.3
Aliquoting is unnecessary for -20°C storage

For technical support and original validation data for this product please contact:
T: 1 (888) 4PTGLAB (1-888-478-4522) (toll free in USA), or 1(312) 455-8498 (outside USA)
E: proteintech@ptglab.com
W: ptglab.com

This product is exclusively available under Proteintech Group brand and is not available to purchase from any other manufacturer.

Selected Validation Data



Immunofluorescent analysis of (4% PFA) fixed HepG2 cells using Coralite® Plus 488 PSIP1 antibody (CL488-85395, Clone: 242841C5) at dilution of 1:200.