

For Research Use Only

CoraLite® Plus 488-conjugated VAMP8 Recombinant monoclonal antibody

Catalog Number: CL488-85400-4



Basic Information

Catalog Number: CL488-85400-4	GenBank Accession Number: BC001634	Purification Method: Protein A purification
Size: 100ul , Concentration: 1000 ug/ml by Nanodrop;	GeneID (NCBI): 8673	CloneNo.: 242830B11
Source: Rabbit	UNIPROT ID: Q9BV40	Recommended Dilutions: IF/ICC: 1:50-1:500
Isotype: IgG	Full Name: vesicle-associated membrane protein 8 (endobrevin)	Excitation/Emission maxima wavelengths: 493 nm / 522 nm
Immunogen Catalog Number: AG7903	Calculated MW: 11 kDa	
	Observed MW: 15 kDa	

Applications

Tested Applications: IF/ICC	Positive Controls: IF/ICC : HeLa cells, HEK-293 cells
Species Specificity: human, mouse, rat	

Background Information

VAMP8, also named as endobrevin, is a member of the vesicle-associated membrane protein (VAMP)/synaptobrevin family and the SNARE (soluble NSF-attachment protein receptor) superfamily. Characterized by a common sequence called the SNARE motif, SNARE proteins are involved in membrane fusion and vesicular transport (PMID: 11252968). VAMP8 is involved in autophagy through the direct control of autophagosome membrane fusion with the lysosome membrane. It is required for dense-granule secretion in platelets and plays a role in regulated enzyme secretion in pancreatic acinar cells. VAMP8 is also involved in the abscission of the midbody during cell division, which leads to completely separate daughter cells.

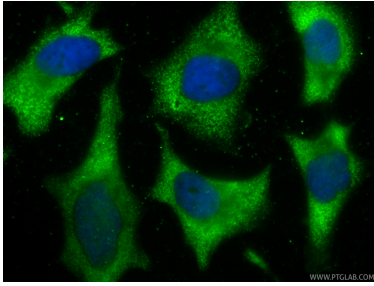
Storage

Storage:
Store at -20°C. Avoid exposure to light. Stable for one year after shipment.
Storage Buffer:
PBS with 50% glycerol, 0.05% Proclin300, 0.5% BSA, pH7.3
Aliquoting is unnecessary for -20°C storage

For technical support and original validation data for this product please contact:
T: 1 (888) 4PTGLAB (1-888-478-4522) (toll free in USA), or 1(312) 455-8498 (outside USA)
E: proteintech@ptglab.com
W: ptglab.com

This product is exclusively available under Proteintech Group brand and is not available to purchase from any other manufacturer.

Selected Validation Data



Immunofluorescent analysis of (-20°C Ethanol) fixed HeLa cells using CoraLite® Plus 488 VAMP8 antibody (CL488-85400-4, Clone: 242830B11) at dilution of 1:200.