

For Research Use Only

CoraLite® Plus 488-conjugated Uromodulin Recombinant monoclonal antibody

Catalog Number: **CL488-85597-4**



Basic Information

Catalog Number: CL488-85597-4	GenBank Accession Number: NM_009470.5	Purification Method: Protein A purification
Size: 100ul , Concentration: 1000 ug/ml by Nanodrop;	GeneID (NCBI): 22242	CloneNo.: 242258H4
Source: Rabbit	UNIPROT ID: Q91X17	Recommended Dilutions: IF-P: 1:50-1:500
Isotype: IgG	Full Name: Uromodulin	Excitation/Emission maxima wavelengths: 493 nm / 522 nm
Immunogen Catalog Number: EG2748	Calculated MW: 71 kDa	
	Observed MW: 110 kDa	

Applications

Tested Applications: IF-P	Positive Controls: IF-P : mouse kidney tissue,
Species Specificity: mouse	

Background Information

Uromodulin, also known as THP (Tamm-Horsfall glycoprotein), is the most abundant protein excreted in the urine under physiological conditions. Uromodulin is synthesized by the kidney and localizes in cells lining the ascending limb of Henle and distal convoluted tubule. Uromodulin is linked to water/electrolyte balance and kidney innate immunity. Also, studies in knockout mice demonstrated that it has a protective role against urinary tract infections and renal stone formation. Mutations in the gene encoding uromodulin lead to rare autosomal dominant diseases, collectively referred to as uromodulin-associated kidney diseases. (PMID: 21654721)

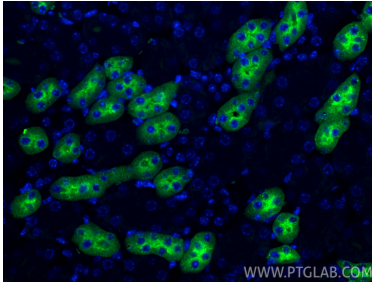
Storage

Storage:
Store at -20°C. Avoid exposure to light. Stable for one year after shipment.
Storage Buffer:
PBS with 50% glycerol, 0.05% Proclin300, 0.5% BSA, pH7.3
Aliquoting is unnecessary for -20°C storage

For technical support and original validation data for this product please contact:
T: 1 (888) 4PTGLAB (1-888-478-4522) (toll free in USA), or 1(312) 455-8498 (outside USA)
E: proteintech@ptglab.com
W: ptglab.com

This product is exclusively available under Proteintech Group brand and is not available to purchase from any other manufacturer.

Selected Validation Data



Immunofluorescent analysis of (4% PFA) fixed paraffin-embedded mouse kidney tissue using CoraLite® Plus 488 Uromodulin antibody (CL488-85597-4, Clone: 242258H4) at dilution of 1:200. Heat mediated antigen retrieval with Tris-EDTA buffer (pH 9.0).