

For Research Use Only

CoraLite® Plus 488-conjugated IQGAP1 Recombinant monoclonal antibody

Catalog Number: CL488-85651



Basic Information

Catalog Number:

CL488-85651

Size:

100ul , Concentration: 1000 ug/ml by
Nanodrop;

Source:

Rabbit

Isotype:

IgG

Immunogen Catalog Number:

AG19321

GenBank Accession Number:

BC151834

GeneID (NCBI):

8826

ENSEMBL Gene ID:

ENSG00000140575

UNIPROT ID:

P46940

Full Name:

IQ motif containing GTPase
activating protein 1

Calculated MW:

189 kDa

Purification Method:

Protein A purification

CloneNo.:

242206G2

Recommended Dilutions:

IF/ICC: 1:50-1:500

Excitation/Emission maxima wavelengths:

493 nm / 522 nm

Applications

Tested Applications:

IF/ICC

Species Specificity:

human

Positive Controls:

IF/ICC : MCF-7 cells, A431 cells

Background Information

IQGAP1 is a member of a family of scaffolding proteins that interact with signaling and structural molecules. It localizes to sites of cell-cell contact in epithelial cells and regulates distinct cellular processes including cell adhesion, cell migration, extracellular signals through interacting with numerous protein. Multiple studies have shown that IQGAP1 is up-regulated in many human malignancies, such as lung cancer, ovarian cancer, colon cancer, breast cancer, melanoma and HCC. And IQGAP1 plays a critical role in cancer cell invasion.

Storage

Storage:

Store at -20°C. Avoid exposure to light. Stable for one year after shipment.

Storage Buffer:

PBS with 50% glycerol, 0.05% Proclin300, 0.5% BSA, pH7.3

Aliquoting is unnecessary for -20°C storage

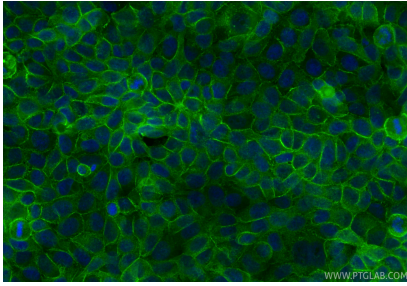
For technical support and original validation data for this product please contact:

T: 1 (888) 4PTGLAB (1-888-478-4522) (toll free
in USA), or 1(312) 455-8498 (outside USA)

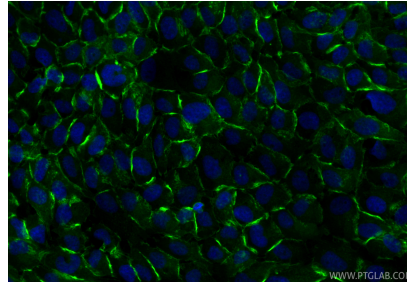
E: proteintech@ptglab.com
W: ptglab.com

This product is exclusively available under Proteintech Group brand and is not available to purchase from any other manufacturer.

Selected Validation Data



Immunofluorescent analysis of (4% PFA) fixed MCF-7 cells using Coralite® Plus 488 IQGAP1 antibody (CL488-85651, Clone: 242206G2) at dilution of 1:200.



Immunofluorescent analysis of (4% PFA) fixed A431 cells using Coralite® Plus 488 IQGAP1 antibody (CL488-85651, Clone: 242206G2) at dilution of 1:200.