

For Research Use Only

# CoraLite® Plus 488-conjugated RPL10A Recombinant antibody

Catalog Number:CL488-85685



## Basic Information

Catalog Number:

CL488-85685

Size:

100ul , Concentration: 1000 ug/ml by  
Nanodrop;

Source:

Rabbit

Isotype:

IgG

Immunogen Catalog Number:

AG10009

GenBank Accession Number:

BC006791

GeneID (NCBI):

4736

UNIPROT ID:

P62906

Full Name:

ribosomal protein L10a

Calculated MW:

25 kDa

Observed MW:

25 kDa

Purification Method:

Protein A purification

CloneNo.:

243031C10

Recommended Dilutions:

IF/ICC: 1:50-1:500

Excitation/Emission maxima  
wavelengths:

493 nm / 522 nm

## Applications

Tested Applications:

IF/ICC

Species Specificity:

human, mouse, rat

Positive Controls:

IF/ICC : HepG2 cells,

## Background Information

RPL10A (Ribosomal Protein L10a) is a component of the 60S subunit of the ribosome and belongs to the L1P family of ribosomal proteins. It is located in the cytoplasm. RPL10A is ubiquitously expressed in various tissues, it plays a crucial role in ribosome biogenesis and protein synthesis. In addition to its role in protein synthesis, RPL10A has been implicated in cell proliferation, embryogenesis, and organogenesis. PMID: 29953919

## Storage

Storage:

Store at -20°C. Avoid exposure to light. Stable for one year after shipment.

Storage Buffer:

PBS with 50% glycerol, 0.05% Proclin300, 0.5% BSA, pH7.3

Aliquoting is unnecessary for -20°C storage

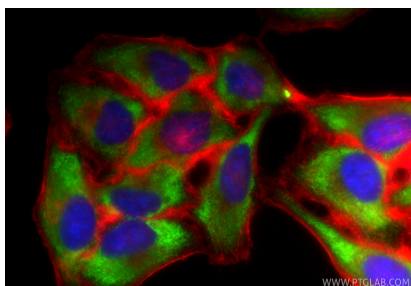
For technical support and original validation data for this product please contact:

T: 1 (888) 4PTGLAB (1-888-478-4522) (toll free  
in USA), or 1(312) 455-8498 (outside USA)

E: [proteintech@ptglab.com](mailto:proteintech@ptglab.com)  
W: [ptglab.com](http://ptglab.com)

This product is exclusively available under Proteintech Group brand and is not available to purchase from any other manufacturer.

## Selected Validation Data



Immunofluorescent analysis of (-20°C Ethanol) fixed HepG2 cells using CoraLite® Plus 488 RPL10A antibody (CL488-85685, Clone: 243031C10) at dilution of 1:200, CL594-Phalloidin (red).