

For Research Use Only

# CoraLite® Plus 488-conjugated C1QA Recombinant monoclonal antibody

Catalog Number: CL488-85719-4



## Basic Information

Catalog Number:

CL488-85719-4

Size:

100ul , Concentration: 1000 ug/ml by Nanodrop;

Source:

Rabbit

Isotype:

IgG

Immunogen Catalog Number:

EG2396

GenBank Accession Number:

NM\_015991.4

GeneID (NCBI):

712

UNIPROT ID:

P02745

Full Name:

complement component 1, q

subcomponent, A chain

Calculated MW:

26kDa

Observed MW:

26-30 kDa

Purification Method:

Protein A purification

CloneNo.:

250093H1

Recommended Dilutions:

IF/ICC: 1:50-1:500

Excitation/Emission maxima

wavelengths:

493 nm / 522 nm

## Applications

Tested Applications:

IF/ICC

Species Specificity:

human, mouse

Positive Controls:

IF/ICC : HepG2 cells,

## Background Information

The first component of complement, C1, is a calcium-dependent complex of the 3 subcomponents C1q, C1r, and C1s. C1q is composed of 18 polypeptide chains: six A-chains, six B-chains, and six C-chains. Each chain contains a collagen-like region located near the N terminus and a C-terminal globular region. Deficiency of C1q has been associated with lupus erythematosus and glomerulonephritis. This antibody is raised against C1qA which is the A-chain polypeptide of human complement subcomponent C1q.

## Storage

Storage:

Store at -20°C. Avoid exposure to light. Stable for one year after shipment.

Storage Buffer:

PBS with 50% glycerol, 0.05% Proclin300, 0.5% BSA, pH7.3

Aliquoting is unnecessary for -20°C storage

For technical support and original validation data for this product please contact:

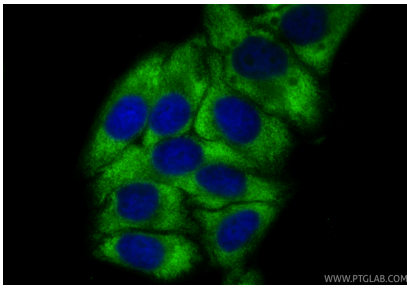
T: 1 (888) 4PTGLAB (1-888-478-4522) (toll free in USA), or 1(312) 455-8498 (outside USA)

E: [proteintech@ptglab.com](mailto:proteintech@ptglab.com)

W: [ptglab.com](http://ptglab.com)

This product is exclusively available under Proteintech Group brand and is not available to purchase from any other manufacturer.

## Selected Validation Data



Immunofluorescent analysis of (-20°C Ethanol) fixed HepG2 cells using CoraLite® Plus 488 C1QA antibody (CL488-85719-4, Clone: 250093H1 ) at dilution of 1:200.